

***Tarrison** Products Ltd.*



- **Commercial Stainless Steel Equipment**

- **Stainless Steel Sinks**

- **Commercial Plumbing**

- **Storage and Handling Equipment**



Table of Contents

Work Tables & Equipment Stands	pages 3 to 8
Wall Shelves & Overshelves	page 9
Pot Racks & Accessories	pages 10, 11
Clean & Soiled Dish Tables	pages 12 to 15

Stainless Steel Sinks	pages 16 to 21
Corner & Centre Drain, Hand Sinks, Cocktail & Bar Sinks	

Plumbing Fixtures	pages 22 to 33
Pre-Rinse Units, Faucets, Waste Units, Accessories	

Work Centres	pages 34 to 37
Shelves	pages 38 to 45
Racks & Carts	pages 46 to 51
Storage & Security	page 52
Material Handling	page 53
High Density Storage	pages 54 to 57
Racks	page 58
Wall Planner	pages 59 to 61
Retail Solutions	pages 62 to 67
Accessories	pages 68 to 73
Specifications	page 74
Index	page 75

**ALL PRODUCTS
AVAILABLE IN ANY
FINISH OR COLOUR**
May require a minimum quantity ordered



Measurements

D - (depth) x **L** - (length) x **H** - (height)

All sizes nominal, detailed specifications available upon request.

Specifications subject to change without notice.

Custom Applications for Stainless and Wire

Tarrison Products separates itself from its competitors through custom capabilities. We've got the experience, the means and the desire to work with you to develop any product you need. Just phone, fax or email your Tarrison Products' Representative with what you need and we'll get to work to develop just that.

In addition, Tarrison shelving can be delivered in any finish or colour you want, with minimum quantities ordered. Just contact your Tarrison Representative with your request.



METRIC CONVERSION CHART

Inches	1	2	3	4	5	6	7	8	9	10	11	12	13	14	15	16	17	18	19	20	21	22	23	24	30	36	42	48	54	60	66	72	78	84	90	96
mm	25	51	76	102	127	152	178	203	229	254	279	305	330	356	381	406	432	457	483	508	533	559	584	610	762	914	1067	1219	1372	1524	1676	1829	1981	2134	2286	2438

Work Tables & Equipment Stands

Work Tables

- Heavy duty 304 series stainless steel top
- Galvanized or stainless steel legs and undershelf
- Adjustable bullet feet



WT-3048



WT-3048LB3S
Open base model

Model No. with galvanized legs & undershelf	Model No. with Stainless Steel legs & undershelf	Size D" x L" x H"	Weight lbs.
WT-2424	SWT-2424	24 x 24 x 35	42
WT-2430	SWT-2430	24 x 30 x 35	48
WT-2436	SWT-2436	24 x 36 x 35	55
WT-2448	SWT-2448	24 x 48 x 35	65
WT-2460	SWT-2460	24 x 60 x 35	80
WT-2472	SWT-2472	24 x 72 x 35	90
WT-2484	SWT-2484	24 x 84 x 35	100
WT-2496	SWT-2496	24 x 96 x 35	105
WT-3030	SWT-3030	30 x 30 x 35	50
WT-3036	SWT-3036	30 x 36 x 35	57
WT-3048	SWT-3048	30 x 48 x 35	69
WT-3060	SWT-3060	30 x 60 x 35	83
WT-3072	SWT-3072	30 x 72 x 35	95
WT-3084	SWT-3084	30 x 84 x 35	105
WT-3096	SWT-3096	30 x 96 x 35	110

Also available open base model. Add suffix LB3S., see page 11

Sizes nominal, detailed specifications available upon request.
Specifications subject to change without notice.

WT4BS-18WS



4" Backsplash Work Tables

- Heavy Duty 304 series stainless steel top
- Galvanized or stainless steel legs and undershelf
- Four inch backsplash
- Adjustable bullet feet
- Working height 35" add 4" for overall height



WT4BS-3048



Open base model

Model Number	Model Number	Size D" x L" x H"	Weight lbs.
WT4BS-18WS W/5" deep sink	SWT4BS-18WS W/5" deep sink	30 x 18 x 35	48
WT4BS-3018	SWT4BS-3018	30 x 18 x 35	35
WT4BS-3030	SWT4BS-3030	30 x 30 x 35	50
WT4BS-3036	SWT4BS-3036	30 x 36 x 35	57
WT4BS-3048	SWT4BS-3048	30 x 48 x 35	69
WT4BS-3060	SWT4BS-3060	30 x 60 x 35	83
WT4BS-3072	SWT4BS-3072	30 x 72 x 35	95
WT4BS-3084	SWT4BS-3084	30 x 84 x 35	105
WT4BS-3096	SWT4BS-3096	30 x 96 x 35	110

Also available open base model. Add suffix LB3S., see page 11

Sizes nominal, detailed specifications available upon request.
Specifications subject to change without notice.

Work Tables & Equipment Stands

Nested Work Tables

- Heavy Duty 304 series stainless steel tops
- Galvanized legs and undershelf
- 3-sided frame
- Adjustable bullet feet
- 5" casters - 2 with brakes on lower table

Model Number	Upper Size D" x L" x H"	Lower Size D" x L" x H"	Weight lbs.
NT-3048-36	30 x 48 x 35	24 x 36 x 32	134
NT-3060-48	30 x 60 x 35	24 x 48 x 32	158
NT-3072-60	30 x 72 x 35	24 x 60 x 32	185
NT-3084-72	30 x 84 x 35	24 x 72 x 32	205
*NT-3096-36	30 x 96 x 35	24 x 2(36) x 32	240
*NT-3096-36 COMES WITH TWO 24" x 36" x 32" HIGH TABLES			
Sizes nominal, detailed specifications available upon request. Specifications subject to change without notice.			



NT3072-60

30" x 84" = 2520 sq.in.

24" x 72" = 1728 sq.in.

Gain Up to
46%
more work space

Nested Work Tables with 4" backsplash

- Heavy Duty 304 series stainless steel tops
- Galvanized legs and undershelf
- 3-sided frame
- Adjustable bullet feet
- 5" casters - 2 with brakes on lower table
- 4" backsplash

Model Number	Upper Size D" x L" x H"	Lower Size D" x L" x H"	Weight lbs.
NT4BS3048-36	30 x 48 x 35/39	24 x 36 x 32	134
NT4BS3060-48	30 x 60 x 35/39	24 x 48 x 32	158
NT4BS3072-60	30 x 72 x 35/39	24 x 60 x 32	185
NT4BS3084-72	30 x 84 x 35/39	24 x 72 x 32	205
*NT4BS3096-36	30 x 96 x 35/39	24 x 2(36) x 32	240
*NT-3096-36 comes with two 24" x 36" x 32" High Tables			
Sizes nominal, detailed specifications available upon request. Specifications subject to change without notice.			



NT4BS3048-36

Riser Back Work Tables Feature

- Heavy Duty 304 series stainless steel top
- Galvanized legs and undershelf
- One and one half inch riser backsplash
- Adjustable bullet feet

Model Number	Size D" x L" x H"	Weight lbs.
WTR-3030	30 x 30 x 35/36.5	50
WTR-3036	30 x 36 x 35/36.5	57
WTR-3048	30 x 48 x 35/36.5	69
WTR-3060	30 x 60 x 35/36.5	83
WTR-3072	30 x 72 x 35/36.5	95
WTR-3084	30 x 84 x 35/36.5	105
WTR-3096	30 x 96 x 35/36.5	110
Also available open base model. Add suffix LB3S, see page 11		
Sizes nominal, detailed specifications available upon request. Specifications subject to change without notice.		



WTR-3048

Work Tables & Equipment Stands



DT-48

Demo Table w/Overhead Mirror

- Heavy Duty 304 series stainless steel top
- Galvanized legs and undershelf
- Overhead Mirror System

Model Number	Size D" x L" x H"	Weight lbs.
DT48	30 x 48 x 35	109
DT-60	30 x 60 x 35	128
DT-72	30 x 72 x 35	145
*Optional swivel casters, stainless steel legs and shelf available upon request.		
Sizes nominal, detailed specifications available upon request. Specifications subject to change without notice.		



ES-48

Heavy Duty Equipment Stands

- Heavy Duty 16 Gauge 304 series stainless steel top
- Galvanized legs and undershelf
- One and one half inch 3-sided riser
- Adjustable bullet feet

Model Number	Size D" x L" x H"	Weight lbs.
ES-12	30 x 12 x 24	32
ES-18	30 x 18 x 24	40
ES-24	30 x 24 x 24	48
ES-30	30 x 30 x 24	52
ES-36	30 x 36 x 24	57
ES-48	30 x 48 x 24	69
ES-60	30 x 60 x 24	75
ES-72	30 x 72 x 24	100
*Optional swivel casters, stainless steel legs and shelf available upon request.		
Sizes nominal, detailed specifications available upon request. Specifications subject to change without notice.		



ES-24

Heavy-duty equipment stands are durable, strong and designed to provide accurate cooking height.

Shown with optional Charbroiler



MS2424

Mixer Table

- Heavy Duty 16 Gauge 304 series stainless steel top
- Galvanized legs and undershelf
- One and one half inch 3-sided riser
- Adjustable bullet feet

Model Number	Size D" x L" x H"	Weight lbs.
MS2424	24 x 24 x 24	48
MS3030	30 x 30 x 24	52
UR54	54" high utensil rack complete with five utility rods	8
*Optional swivel casters, stainless steel legs and shelf available upon request.		
Sizes nominal, detailed specifications available upon request. Specifications subject to change without notice.		

Hardwood Work Tables

Hardwood Top Work Table

- Hardwood top - 1¾" thick
- 34" Chrome Posts with two 24" - 3 sided braces or two chrome wire shelves (24" or 30") and four Wood Top Joiners

Model No. with undershelves	Weight lbs.	Model No. (open base)	Weight lbs.	Size D" x L" x H"
HTS-2424C	52	HTB-2424C	46	24 x 24 x 35
HTS-2430C	63	HTB-2430C	53	24 x 30 x 35
HTS-2436C	76	HTB-2436C	66	24 x 36 x 35
HTS-2448C	95	HTB-2448C	83	24 x 48 x 35
HTS-2460C	118	HTB-2460C	100	24 x 60 x 35
HTS-2472C	139	HTB-2472C	117	24 x 72 x 35
HTS-3036C	92	HTB-3036C	79	30 x 36 x 35
HTS-3048C	116	HTB-3048C	104	30 x 48 x 35
HTS-3060C	141	HTB-3060C	128	30 x 60 x 35
HTS-3072C	165	HTB-3072C	153	30 x 72 x 35

Optional s/s legs and undershelf also available see page 38

Sizes nominal, detailed specifications available upon request.
Specifications subject to change without notice.



HTB-3048C



HTS-3048C

4" Backsplash Hardwood Work Table

- Hardwood top - 1¾" thick
- Four inch backsplash riser on 3 sides - 1" thick
- 34" Chrome Posts with two 24" - 3 sided braces or two 30" chrome wire shelves and four Wood Top Joiners

Model No. with undershelves	Wt. lbs.	Model No. (open base)	Wt. lbs.	Size D" x L" x H"
HT4BS-3036C	89	HT4BSB-3036C	77	30 x 36 x 35/39
HT4BS-3048C	114	HT4BSB-3048C	101	30 x 48 x 35/39
HT4BS-3060C	137	HT4BSB-3060C	125	30 x 60 x 35/39
HT4BS-3072C	161	HT4BSB-3072C	149	30 x 72 x 35/39

24" deep and additional lengths available on special request.
Optional s/s legs and undershelf also available see page 38

Sizes nominal, detailed specifications available upon request.
Specifications subject to change without notice.



HT4BSB-3048C



HT4BS-3048C



**Call your Tarrison rep
for custom applications**

Hardwood Work Tables



HTS-3048G



HTB-3048G



HT4BS-3048G



HT4BSB-3048G

Hardwood Top Work Table

- Hardwood top - 1¾" thick
- Galvanized legs with adjustable bullet feet
- Available with galvanized undershelf or open base

Model No. with undershelf	Weight lbs.	Model No. (open base)	Weight lbs.	Size D" x L" x H"
HTS-2424G	50	HTB-2424G	40	24 x 24 x 35
HTS-2430G	64	HTB-2430G	54	24 x 30 x 35
HTS-2436G	76	HTB-2436G	66	24 x 36 x 35
HTS-2448G	95	HTB-2448G	83	24 x 48 x 35
HTS-2460G	118	HTB-2460G	100	24 x 60 x 35
HTS-2472G	139	HTB-2472G	117	24 x 72 x 35
HTS-2484G	174	HTB-2484G	134	24 x 84 x 35
HTS-2496G	212	HTB-2496G	152	24 x 96 x 35
HTS-3036G	92	HTB-3036G	79	30 x 36 x 35
HTS-3048G	116	HTB-3048G	104	30 x 48 x 35
HTS-3060G	141	HTB-3060G	128	30 x 60 x 35
HTS-3072G	165	HTB-3072G	153	30 x 72 x 35
HTS-3084G	200	HTB-3084G	177	30 x 84 x 35
HTS-3096G	228	HTB-3096G	200	30 x 96 x 35

Optional s/s legs and undershelf also available see page 11

Sizes nominal, detailed specifications available upon request.
Specifications subject to change without notice.

4" Backsplash Hardwood Work Table

- Hardwood top - 1¾" thick
- Four inch backsplash riser on 3 sides - 1" thick
- Galvanized legs with adjustable bullet feet
- Available with galvanized undershelf or open base

Model No. with undershelf	Wt. lbs.	Model No. (open base)	Wt. lbs.	Size D" x L" x H"
HT4BS-3036G	89	HT4BSB-3036G	77	30 x 36 x 35/39
HT4BS-3048G	114	HT4BSB-3048G	101	30 x 48 x 35/39
HT4BS-3060G	137	HT4BSB-3060G	125	30 x 60 x 35/39
HT4BS-3072G	161	HT4BSB-3072G	149	30 x 72 x 35/39

24" width and additional lengths available on special request.
Optional s/s legs and undershelf also available see page 11

Sizes nominal, detailed specifications available upon request.
Specifications subject to change without notice.



Stainless Steel Drawer Assembly, see page 11

Work Tables & Equipment Stands

Poly Top Trimming Table

- Heavy duty 18 Gauge 304 series stainless steel welded deck
- Poly Top - ¾" thick, FDA Approved Sanalite
- Galvanized legs with adjustable bullet feet
- Available with stainless steel undershelf or open base

Model No. with underself	Weight lbs.	Model No. (open base)	Weight lbs.	Overall Size D" x L" x H"
PTS-2448	64	PTB-2448	52	24 x 48 x 35
PTS-2460	78	PTB-2460	60	24 x 60 x 35
PTS-2472	90	PTB-2472	68	24 x 72 x 35
PTS-2484	108	PTB-2484	76	24 x 84 x 35
PTS-2496	124	PTB-2496	84	24 x 96 x 35
PTS-3048	72	PTB-3048	60	30 x 48 x 35
PTS-3060	83	PTB-3060	70	30 x 60 x 35
PTS-3072	92	PTB-3072	80	30 x 72 x 35
PTS-3084	110	PTB-3084	90	30 x 84 x 35
PTS-3096	125	PTB-3096	100	30 x 96 x 35

*Optional s/s legs and undershelf also available see page 11

Sizes nominal, detailed specifications available upon request.
Specifications subject to change without notice.



PTB-3048



Bun Pan Rack Features:

- Heavy Duty Stainless Steel or Galvanized construction
- 1" Square Upright Tubing
- 5" Swivel Casters
- Pan Capacity based on 18x26" Bun Pans as follows:
- 40 pans on 1.5" spacing
- 20 pans on 3" spacing
- End Load or Side Load - specify when ordering

End and Side Load Pan Racks

Description	Stainless Model No.	Galvanized Model No.	Pan Capacity	Shelf Spacing (inches)	Overall Size D" x L" x H"	Weight lbs.
End Load Bun Pan Rack	PRE15S	PRE15G	40	1.5	27 x 19 x 70	55
End Load Bun Pan Rack	PRE30S	PRE30G	20	3.0	27 x 19 x 70	45
Side Load Bun Pan Rack	PRS15S	PRS15G	40	1.5	19 x 27 x 70	55
Side Load Bun Pan Rack	PRS30S	PRS30G	20	3.0	19 x 27 x 70	45

Sizes nominal, detailed specifications available upon request. Specifications subject to change without notice.

Wall Shelves & Over Shelves



Work Table Overshelves

- Heavy duty 18 Gauge 304 series stainless steel shelf tops
- Mounting brackets and clips supplied
- Mounting and/or assembly required

Model No.	Size D" x L" x H"	Weight lbs.
SINGLE OVERSHELF - 12" WIDE		
SOS1236	12 x 36 x 18	14.0
SOS1248	12 x 48 x 18	16.0
SOS1260	12 x 60 x 18	20.0
SOS1272	12 x 72 x 18	24.0
DOUBLE OVERSHELF - 12" WIDE		
DOS1236	12 x 36 x 30	28.0
DOS1248	12 x 48 x 30	32.0
DOS1260	12 x 60 x 30	40.0
DOS1272	12 x 72 x 30	48.0
SINGLE OVERSHELF - 18" WIDE		
SOS1836	18 x 36 x 18	20.0
SOS1848	18 x 48 x 18	24.0
SOS1860	18 x 60 x 18	30.0
SOS1872	18 x 72 x 18	36.0
DOUBLE OVERSHELF - 18" WIDE		
DOS1836	18 x 36 x 30	42.0
DOS1848	18 x 48 x 30	48.0
DOS1860	18 x 60 x 30	60.0
DOS1872	18 x 72 x 30	70.0

Sizes nominal, detailed specifications available upon request.
Specifications subject to change without notice.

Wall Shelves

- Heavy Duty 16 gauge #304 series stainless steel
- Complete with brackets, and 3-sided riser
- Bull Nose front for added strength



See page 59 for more Wall Mount Shelves

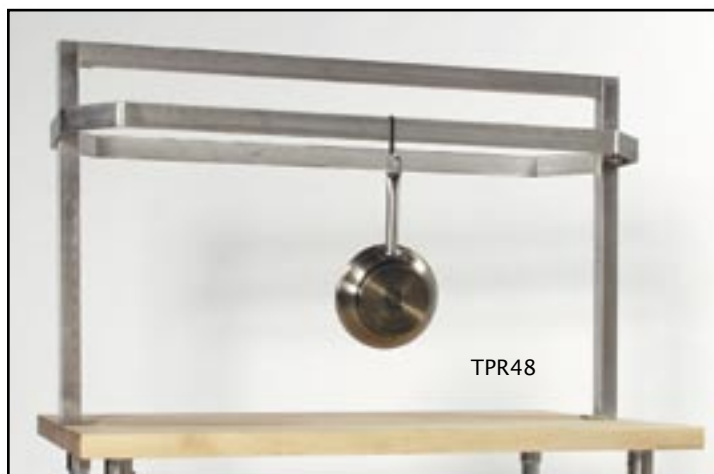
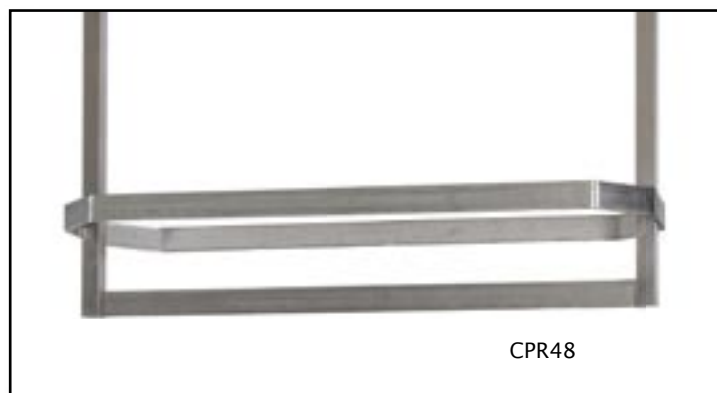
Model No.	Description	Size D" x L"	Weight lbs.
WS-1224	Wall Mount Shelf	12" x 24"	10.0
WS-1230	Wall Mount Shelf	12" x 30"	11.0
WS-1236	Wall Mount Shelf	12" x 36"	12.0
WS-1242	Wall Mount Shelf	12" x 42"	14.0
WS-1248	Wall Mount Shelf	12" x 48"	16.0
WS-1254	Wall Mount Shelf	12" x 54"	18.0
WS-1260	Wall Mount Shelf	12" x 60"	20.0
WS-1272	Wall Mount Shelf c/w 3rd. bracket	12" x 72"	24.0
WS-1284	Wall Mount Shelf c/w 3rd. bracket	12" x 72"	30.0
WS-1296	Wall Mount Shelf c/w 3rd. bracket	12" x 72"	34.0
WS-2418	Wall Mount Shelf	24" x 18"	12.0
WS-2424	Wall Mount Shelf for Microwave or Toaster	24" x 24"	16.0
WSB	Wall Shelf Bracket	10" x 11"	2.0

Sizes nominal, detailed specifications available upon request.
Specifications subject to change without notice.

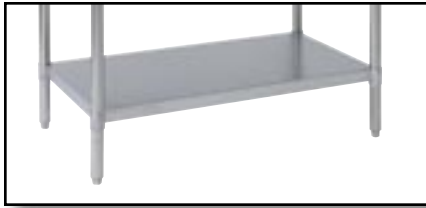
Pot Racks

Wall, Table and Ceiling Pot Racks

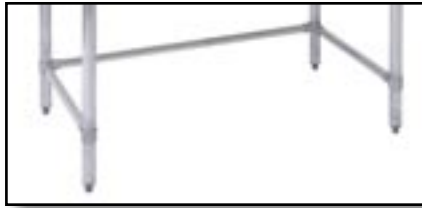
- Keep cookware within easy reach, yet out of the way for an uncluttered kitchen
- Made of durable galvanized steel finish
- Mounting required
- Complete with single hooks
- Additional hooks available separately



Pot Racks				
Model No.	Description	Size D" x L" x H"	Number of Hooks	Weight lbs.
WALL MOUNT POT RACKS				
WPR48	48" Galvanized Wall Mount Pot Rack	10.5" x 48" x xx"	8	30.0
WPR60	60" Galvanized Wall Mount Pot Rack	10.5" x 60" x xx"	10	40.0
WPR72	72" Galvanized Wall Mount Pot Rack	10.5" x 72" x xx"	12	50.0
WPR96	96" Galvanized Wall Mount Pot Rack	10.5" x 96" x xx"	16	50.0
TABLE MOUNT POT RACKS				
TPR48	48" Galvanized Table Mount Pot Rack	16" x 48" x xx"	8	40.0
TPR60	60" Galvanized Table Mount Pot Rack	16" x 60" x 13"	10	50.0
TPR72	72" Galvanized Table Mount Pot Rack	16" x 72" x xx"	12	60.0
TPR96	96" Galvanized Table Mount Pot Rack	16" x 96" x xx"	16	60.0
CEILING MOUNT POT RACKS				
CPR48	48" Galvanized Ceiling Mount Pot Rack	16" x 48" x xx"	8	40.0
CPR60	60" Galvanized Ceiling Mount Pot Rack	16" x 60" x xx"	10	50.0
CPR72	72" Galvanized Ceiling Mount Pot Rack	16" x 72" x xx"	12	60.0
CPR96	96" Galvanized Ceiling Mount Pot Rack	16" x 96" x xx"	16	60.0
HOOKS				
SJH	Small J Hook - see page 70	3.5"		.5
LJH	Large J Hook - see page 70	3.5"		.5
Mounting hardware not included.				
Sizes nominal, detailed specifications available upon request. Specifications subject to change without notice.				



Stainless Steel Undershef for Worktable



3-Sided Brace for Worktable or Sink



Galvanized Undershef for Worktable



Speed Rail



Stainless Steel Drawer Assembly



Tray Slides



1" Post Casters



Wood Top Brace



Work Table Casters for galvanized legs



PRB2020



Removable Drainboard

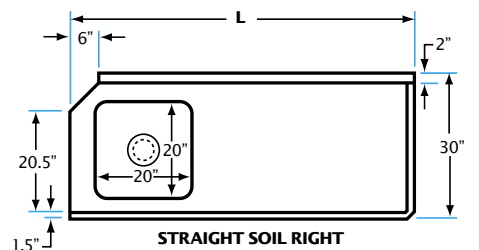
Accessories

Description	Model No.	Model No.	Model No.	Model No.
Galvanized Undershef for Work Tables (24" wide)	US2436G	US2448G	US2460G	US2472G
Galvanized Undershef for Work Tables (30" wide)	US3036G	US3048G	US3060G	US3072G
Stainless Undershef for Work Tables (24" wide)	US2436S	US2448S	US2460S	US2472S
Stainless Undershef for Work Tables (30" wide)	US3036S	US3048S	US3060S	US3072S
Stainless Legs (not shown)	SSLEG			
Speed Rail - 4"x6"x24", 4"x6"x36", 4"x6"x48"	SR24	SR36	SR48	
Pre-rinse perforated tray for Soil Dish Table	PRB2020			
1" Post Caster - Swivel	C5SPS			
1" Post Caster - Swivel/Brake	C5SPB			
Wood Top Brace	WTB			
Leg Brace (3 sided) for sinks or worktables	LB3S*	*Specify sink or worktable size when ordering		
Removable Drain Board	RDB*	*Specify sink model number, left or right when ordering		
5" Swivel Caster for Worktable/ with brake	CM5B			
5" Swivel Caster for Worktable /without brake	CM5			
PolySeal - 18" & 24" Tray Slide Inserts	TS18Z	TS24Z		
Stainless Steel Drawer Assembly 22" D x 24" L x 6.5" H	WCD	Additional charge for installation when ordered with table		

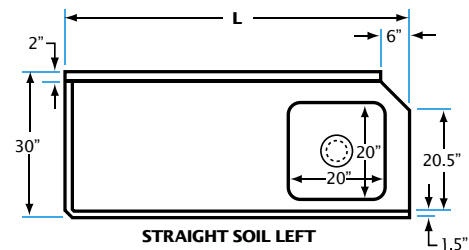
Soiled Dish Tables



SDT60R



STRAIGHT SOIL RIGHT



STRAIGHT SOIL LEFT



PRB2020

Stainless steel perforated pre-rinse included as standard equipment.

Straight Soiled Dish Table

- Heavy duty 16 Gauge 304 series stainless steel construction, complete with:
- 7.5" backsplash
- Stainless steel perforated pre-rinse basket
- Faucet holes on 8" centres
- Galvanized legs and cross brace and adjustable bullet feet

Description	Soiled Dish Table Model No.	Soiled Pot Table Model No.	Overall Size D" x L" x H"	Prerinse Bowl Size D" x L" x H"	Weight lbs.
Sink on RIGHT	SDT36L	SPT36L	30 x 36 x 35/40	20 x 20 x 5 or 8	70
Sink on LEFT	SDT36R	SPT36R	30 x 36 x 35/40	20x 20 x 5 or 8	70
Sink on RIGHT	SDT48L	SPT48L	30 x 48 x 35/40	20 x 20 x 5 or 8	85
Sink on LEFT	SDT48R	SPT48R	30 x 48 x 35/40	20 x 20 x 5 or 8	85
Sink on RIGHT	SDT60L	SPT60L	30 x 60 x 35/40	20 x 20 x 5 or 8	100
Sink on LEFT	SDT60R	SPT60R	30 x 60 x 35/40	20 x 20 x 5 or 8	100
Sink on RIGHT	SDT72L	SPT72L	30 x 72 x 35/40	20 x 20 x 5 or 8	115
Sink on LEFT	SDT72R	SPT72R	30 x 72 x 35/40	20 x 20 x 5 or 8	115

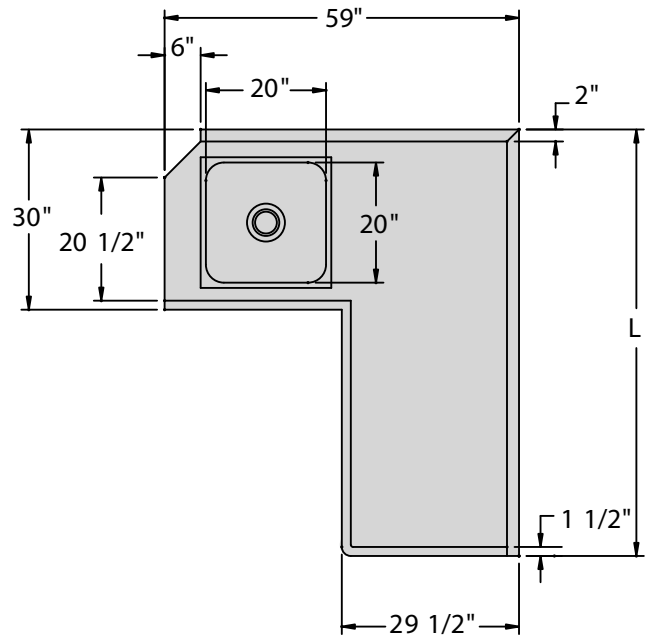
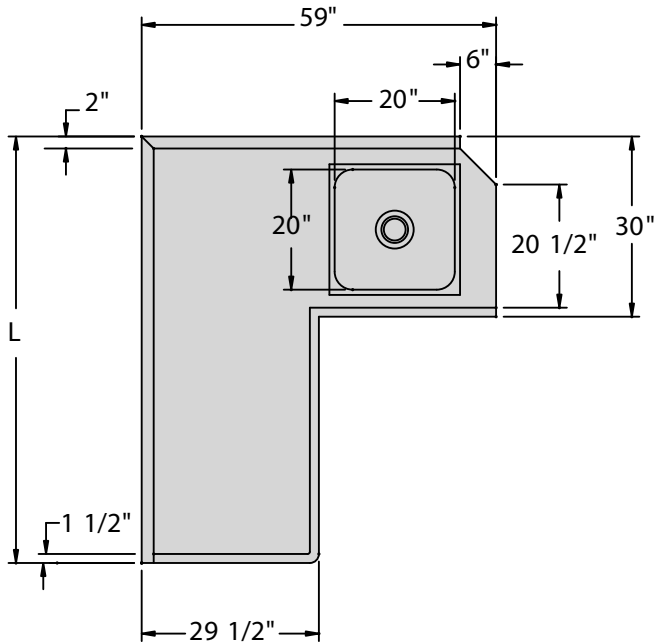
Optional Stainless Steel Legs and Undershef available, see page 14

Straight Soiled Pot Table

- Heavy duty 16 Gauge 304 series stainless steel construction, complete with:
- 7.5" backsplash
- Stainless steel perforated prerinse basket
- Faucet holes on 8" centres
- Galvanized legs and cross brace and adjustable bullet feet



Soiled Dish Tables



Corner Soiled Dish Table

- Heavy duty 16 Gauge 304 series stainless steel construction, complete with:
- 7.5" backsplash
- Stainless steel perforated pre-rinse basket
- Faucet holes on 8" centres
- Galvanized legs and cross brace and adjustable bullet feet

See full line of
Pre-Rinse Units
starting on page
22



Model No.	Description	Overall Size D" x L" x H"	Prerinse Bowl Size D" x L" x H"	Weight lbs.
CSDT36L	Sink on RIGHT	30 x 36 x 35/40	20 x 20 x 5	70
CSDT36R	Sink on LEFT	30 x 36 x 35/40	20x 20 x 5	70
CSDT48L	Sink on RIGHT	30 x 48 x 35/40	20 x 20 x 5	85
CSDT48R	Sink on LEFT	30 x 48 x 35/40	20 x 20 x 5	85
CSDT60L	Sink on RIGHT	30 x 60 x 35/40	20 x 20 x 5	100
CSDT60R	Sink on LEFT	30 x 60 x 35/40	20 x 20 x 5	100
CSDT72L	Sink on RIGHT	30 x 72 x 35/40	20 x 20 x 5	115
CSDT72R	Sink on LEFT	30 x 72 x 35/40	20 x 20 x 5	115
Optional Stainless Steel Legs and Undershelf available, see page 14				
Sizes nominal, detailed specifications available upon request. Specifications subject to change without notice.				

Wall Shelf Dish Rack		
Model No.	Size D" x L" x H"	Weight lbs.
WSDR22-1	16/22 x 22 x 16	22
WSDR22-2	16/22 x 42 x 16	32
WSDR22-3	16/22 x 62 x 16	42
WSDR22-4	16/22 x 82 x 16	52
Mounting hardware not supplied		
Sizes nominal, detailed specifications available upon request. Specifications subject to change without notice.		

Wall Shelf Dish Rack

- Heavy duty 16 Gauge 304 series stainless steel
- Solid stainless steel slanted formed wall mount shelf rack complete with:
- Two solid end brackets
- Drip tube for drainage



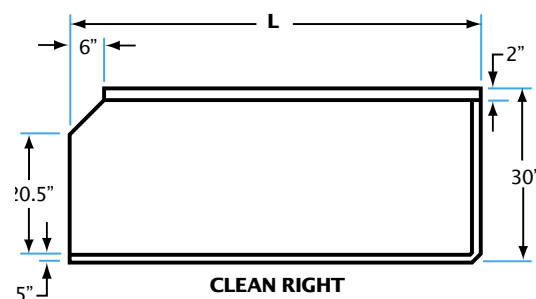
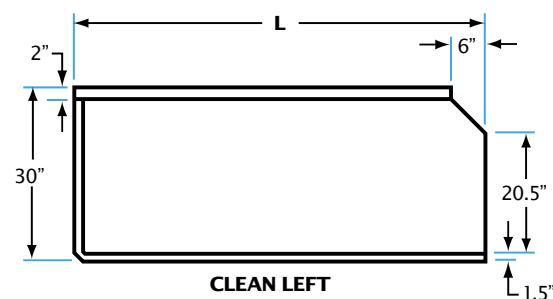
Clean Dish Tables

Clean Dish Table

- Heavy duty 16 Gauge 304 series stainless steel
- 7.5" backsplash
- Galvanized legs with adjustable bullet feet
- Three sided open base



CDT60R



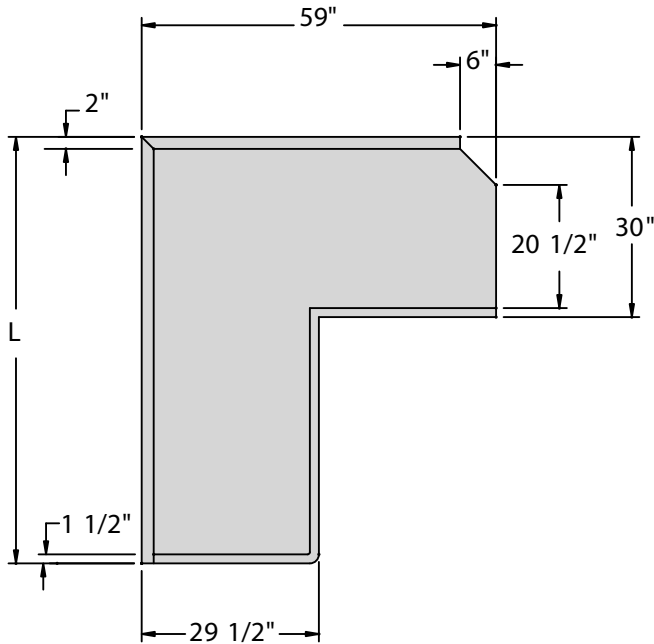
Model No.	Description	Overall Size D" x L" x H"	Weight lbs.
CDT36R	Left Opening	30 x 36 x 35/40	50
CDT36L	Right Opening	30 x 36 x 35/40	50
CDT48R	Left Opening	30 x 48 x 35/40	65
CDT48L	Right Opening	30 x 48 x 35/40	65
CDT60R	Left Opening	30 x 60 x 35/40	75
CDT60L	Right Opening	30 x 60 x 35/40	75
CDT72R	Left Opening	30 x 72 x 35/40	90
CDT72L	Right Opening	30 x 72 x 35/40	90
CDT84R	Left Opening	30 x 84 x 35/40	105
CDT84L	Right Opening	30 x 84 x 35/40	105
CDT96R	Left Opening	30 x 96 x 35/40	115
CDT96L	Right Opening	30 x 96 x 35/40	115

Sizes nominal, detailed specifications available upon request.
Specifications subject to change without notice.

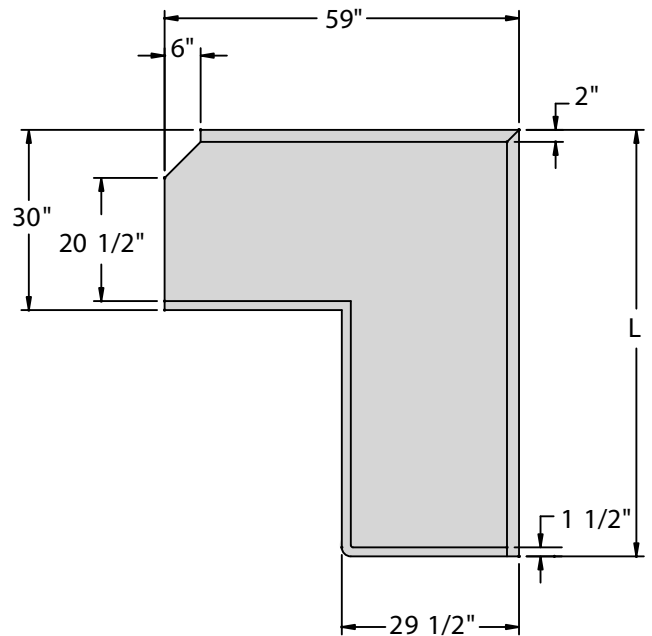


Undershelf and Legs for 30" Clean Dish Table			
Model No. Galvanized	Model No. Stainless Steel	Size D" x L"	Weight lbs.
DTU30246G	DTU30246S	22 x 24	16
DTU30366G	DTU30366S	22 x 36	18
DTU30486G	DTU30486S	22 x 48	22
DTU30606G	DTU30606S	22 x 60	27
DTU30726G	DTU30726S	22 x 72	32

Sizes nominal, detailed specifications available upon request.
Specifications subject to change without notice.



CORNER CLEAN LEFT



CORNER CLEAN RIGHT

Clean Corner Dish Table

- Heavy duty 16 Gauge 304 series stainless steel
- 7.5" backsplash
- Galvanized legs with adjustable bullet feet
- Three sided open base

Model No.	Description	Overall Size D" x L" x H"	Weight lbs.
CCDT36R	Left Opening	30 x 36 x 35/40	130
CCDT36L	Right Opening	30 x 36 x 35/40	130
CCDT48R	Left Opening	30 x 48 x 35/40	150
CCDT48L	Right Opening	30 x 48 x 35/40	150
CCDT60R	Left Opening	30 x 60 x 35/40	170
CCDT60L	Right Opening	30 x 60 x 35/40	170
CCDT72R	Left Opening	30 x 72 x 35/40	195
CCDT72L	Right Opening	30 x 72 x 35/40	195
CCDT84R	Left Opening	30 x 84 x 35/40	210
CCDT84L	Right Opening	30 x 84 x 35/40	210
CCDT96R	Left Opening	30 x 96 x 35/40	220
CCDT96L	Right Opening	30 x 96 x 35/40	220

Sizes nominal, detailed specifications available upon request.
Specifications subject to change without notice.

Stainless Steel Sinks

CORNER Drain Sinks

- #304 Series heavy duty stainless steel
- 13" deep bowls
- "All-Coved" corner construction
- 1.5 inch diameter radius bullnose
- Overflow tube and drain included
- 4 inch x 4 inch x 8 inch high drain guard assembly included
- Galvanized legs, 1 5/8" in diameter
- 3 sided leg brace included on Double and Triple Compartment Sinks
- Adjustable bullet feet
- Wall mount brackets
- Faucet holes on 8 inch centres (faucets not included)



CDS1-18L



CDS1-24



**Overflow tub and
drain guard assembly**



**"All-Coved" corner
construction**

Single Compartment Corner Drain Sink					
Model No.	Description	Bowl Size D" x L"	Overall Size D" x L" x H"	Drainboard Size D" x L"	Weight lbs.
CDS1-18	No Drain Board	21 x 18	27.25 x 23.5 x 36/47	N/A	40.0
CDS1-24	No Drain Board	24 x 24	30 x 29.5 x 36/47	N/A	60.0
CDS1-18L	Left Drain Board	21 x 18	27.25 x 39 x 36/47	23.5 x 16.5	55.0
CDS1-24L	Left Drain Board	24 x 24	30 x 45 x 36/47	23.5 x 16.5	75.0
CDS1-18R	Right Drain Board	21 x 18	27.25 x 39 x 36/47	23.5 x 16.5	55.0
CDS1-24R	Right Drain Board	24 x 24	30 x 45 x 36/47	23.5 x 16.5	75.0
CDS1-18LR	Left and Right Drain Board	21 x 18	27.25 x 54 x 36/47	23.5 x 16.5	70.0
CDS1-24LR	Left and Right Drain Board	24 x 24	30 x 60 x 36/47	23.5 x 16.5	90.0

Sizes nominal, detailed specifications available upon request. Specifications subject to change without notice.

Stainless Steel Sinks



CDS2-18LR



CDS2-18

Double Compartment CORNER Drain Sink with Leg Brace

Model No.	Description	Bowl Size D" x L"	Overall Size D" x L" x H"	Drainboard Size D" x L"	Weight lbs.
CDS2-18	No Drain Board	21 x 18	27.5 x 42 x 36/47	N/A	70.0
CDS2-24	No Drain Board	24 x 24	30 x 54 x 36/47	N/A	105.0
CDS2-18L	Left Drain Board	21 x 18	27.5 x 57 x 36/47	23.5 x 16.5	85.0
CDS2-24L	Left Drain Board	24 x 24	30 x 75 x 36/47	26 x 22	120.0
CDS2-18R	Right Drain Board	21 x 18	27.5 x 57 x 36/47	23.5 x 16.5	85.0
CDS2-24R	Right Drain Board	24 x 24	30 x 75 x 36/47	26 x 22	120.0
CDS2-18LR	Left and Right Drain Board	21 x 18	27.5 x 72 x 36/47	23.5 x 16.5	100.0
CDS2-24LR	Left and Right Drain Board	24 x 24	30 x 96.5 x 36/47	26 x 22	135.0

Sizes nominal, detailed specifications available upon request. Specifications subject to change without notice.



CDS3-18R



CDS3-24

Triple Compartment CORNER Drain Sink with Leg Brace

Model No.	Description	Bowl Size D" x L"	Overall Size D" x L" x H"	Drainboard Size D" x L"	Weight lbs.
CDS3-15	No Drain Board	18 x 15	21.5 x 48 x 36/47	N/A	60.0
CDS3-18	No Drain Board	21 x 18	27.25 x 60 x 36/47	N/A	90.0
CDS3-24	No Drain Board	24 x 24	30 x 78 x 36/47	N/A	160.0
CDS3-18L	Left Drain Board	21 x 18	27.5 x 75 x 36/47	23.5 x 16.5	105.0
CDS3-24L	Left Drain Board	24 x 24	30 x 98.5 x 36/47	26 x 22	175.0
CDS3-18R	Right Drain Board	21 x 18	27.5 x 75 x 36/47	23.5 x 16.5	105.0
CDS3-24R	Right Drain Board	24 x 24	30 x 98.5 x 36/47	26 x 22	175.0
CDS3-18LR	Left and Right Drain Board	21 x 18	27.5 x 90 x 36/47	23.5 x 16.5	120.0
CDS3-24LR	Left and Right Drain Board	24 x 24	30 x 120 x 36/47	26 x 22	190.0

Sizes nominal, detailed specifications available upon request. Specifications subject to change without notice.

Stainless Steel Sinks

CENTRE Drain Sinks

- 18 gauge #304 Series heavy duty stainless steel
- 13" Deep Bowls
- "All-Coved" corner construction
- 1.5 inch diameter radius
- Galvanized legs, 1 5/8" in diameter
- Adjustable bullet feet
- 3.5 inch diameter drain holes (drain baskets not included)
- Faucet holes on 8 inch centres (faucets not included)
- Available 16 Gauge if required



PS1-18R



PS1-24

"All-Coved" Corner Construction



Single Compartment CENTRE Drain					
Model No.	Description	Bowl Size D" x L"	Overall Size D" x L" x H"	Drainboard Size D" x L"	Weight lbs.
PS1-18	No Drain Board	18 x 18	22 x 21 x 36/47	N/A	35.0
PS1-24	No Drain Board	24 x 24	27.5 x 27 x 36/47	N/A	48.0
PS1-18L	Left Drain Board	18 x 18	24 x 39 x 36/47	20.5 x 16.5	50.0
PS1-18R	Right Drain Board	18 x 18	24 x 39 x 36/47	20.5 x 16.5	50.0
PS1-18LR	Left and Right Drain Board	18 x 18	24 x 54 x 36/47	20.5 x 16.5	65.0

Sizes nominal, detailed specifications available upon request. Specifications subject to change without notice.



PS2-18LR



PS2-18R

Double Compartment CENTRE Drain Sink w/Leg Brace

Model No.	Description	Bowl Size D" x L"	Overall Size D" x L" x H"	Drainboard Size D" x L"	Weight lbs.
PS2-18	No Drain Board	18 x 18	24 x 42 x 36/47	N/A	60.0
PS2-18L	Left Drain Board	18 x 18	24 x 57 x 36/47	20.5 x 16.5	70.0
PS2-18R	Right Drain Board	18 x 18	24 x 57 x 36/47	20.5 x 16.5	70.0
PS2-18LR	Left and Right Drain Boards	18 x 18	24 x 72.5 x 36/47	20.5 x 16.5	90.0

Sizes nominal, detailed specifications available upon request. Specifications subject to change without notice.



PS3-18



PS3-18L

Triple Compartment CENTRE Drain Sink w/Leg Brace

Model No.	Description	Bowl Size D" x L"	Overall Size D" x L" x H"	Drainboard Size D" x L"	Weight lbs.
PS3-15	No Drain Board	18 x 15	21.5 x 48 x 36/47	N/A	60.0
PS3-18	No Drain Board	18 x 18	24 x 60 x 36/47	N/A	75.0
PS3-18L	Left Drain Board	18 x 18	24 x 75 x 36/47	20.5 x 16.5	90.0
PS3-18R	Right Drain Board	18 x 18	24 x 75 x 36/47	20.5 x 16.5	90.0
PS3-18LR	Left and Right Drain Boards	18 x 18	24 x 90 x 36/47	20.5 x 16.5	105.0
PS3-18LR-24	Left and Right Drain Boards	18 x 18	24 x 102 x 36/47	20.5 x 22.5	120.0
PS3-21LR	Left and Right Drain Boards	21 x 18	27 x 90 x 36/47	23.5 x 16.5	120.0
PS3-21LR-24	Left and Right Drain Boards	21 x 18	27 x 102 x 36/47	23.5 x 22.5	135.0

Sizes nominal, detailed specifications available upon request. Specifications subject to change without notice.

Stainless Steel Sinks



HSF-14



HS-14



HS-14-1



HS-14SP
with side panels

Wall Mount Hand Sinks

- 18 gauge #304 Series heavy duty stainless steel
- Available with two faucet holes on 4 inch centres or single hole in centre
- Eight inch high backsplash
- HSF14 model comes complete with wall mount backsplash faucet and drain basket

Work Table with Sink and 4" Backsplash

- Four inch backsplash, 3.5" drain hole
- Galvanized legs and undershelf
- Faucet holes on 4" centres



WT4BS-WS18

Mop Sink

- 18 gauge #304 Series heavy duty stainless steel
- Riser back of 1.5" and 3.5" drain hole

Drop-In Hand Sink

- 18 gauge #304 Series heavy duty stainless steel
- Faucet holes on 4 inch centres, 3.5" drain hole

OEM Sink

- 16 gauge #304 Series heavy duty stainless steel, 3.5" drain hole



DI-14



MS-16206



SB-172410

Model No.	Description	Bowl Size D x L x H	Overall Size D x L x H	Weight lbs.
HSF-14	Hand Sink With Faucet	10" x 14" x 5"	15.25" x 17.0" x 13.375"	15
HS-14	Hand Sink Only, 4" Centres	10" x 14" x 5"	15.25" x 17.0" x 13.375"	13
HS-14-1	Hand Sink Only (Single Faucet Hole)	10" x 14" x 5"	15.25" x 17.0" x 13.375"	13
HS-14SP	Hand Sink Only with Side Panels	10" x 14" x 5"	15.25" x 17.0" x 13.375"	13
HSS	Hand Sink Skirt (not shown)	n/a	Specified at time of order	10
DI-14	Hand Sink Only (Drop In)	14" x 10" x 5"	19.5" x 13.0" x 5.75"	10
MS-16206	Mop Sink, 3.5" Drain Hole	16" x 20" x 6"	20 x 24 x 10.5/12	15
WT4BS-18WS	Work Table with Backsplash and 5" deep sink	18" x 12" x 5"	30" x 18" x 35"	48
SB-172410	OEM Sink Bowl, other sizes on request	17" x 24" x 10"	17" x 24" x 10"	20

Sizes nominal, detailed specifications available upon request. Specifications subject to change without notice.



CMU48

Cocktail Mix Unit

- #304 Series heavy duty stainless steel
- Faucet holes on 4 inch centres
- Seven inch high backsplash
- Insulated Ice Bin
- Galvanized Legs with adjustable bullet feet
- Integrated Stainless Steel Speed Rail
- See page 28 for Deck Mount Faucets

Model Number	Bowl Size D" x L" x H"	Ice Bin Size D" x L" x H"	Overall Size D" x L" x H"	Weight lbs.
CMU48	14 x 10 x 10	14 x 32 x 10	24 x 48 x 30/37	190
CMU54	14 x 10 x 10	14 x 38 x 10	24 x 54 x 30/37	210
CMU60	14 x 10 x 10	14 x 44 x 10	24 x 60 x 30/37	230

Sizes nominal, detailed specifications available upon request. Specifications subject to change without notice.



BS310LR

Bar Sink

- #304 Series heavy duty stainless steel
- Faucet holes on 4 inch centres, two sets on BS410LR
- Four inch high backsplash
- Galvanized Legs with adjustable bullet feet



Speed Rail SR24
see page 11

Model Number	Description	Bowl Size D" x L" x H"	Overall Size D" x L" x H"	Weight lbs.
BS210LR	Bar Sink, 2 compartment	14 x 10 x 10	18 x 48 x 32/36	40.0
BS310LR	Bar Sink, 3 compartment	14 x 10 x 10	18 x 60 x 32/36	50.0
BS410LR	Bar Sink, 4 compartment	14 x 10 x 10	18 x 72 x 32/36	60.0

Sizes nominal, detailed specifications available upon request. Specifications subject to change without notice.



908000-B

8" Wall & Deck Mount Pre-Rinse Units

- A 3-ply, 400 PSI test hose
- Integral spring check valves to prevent cross-flow of hot and cold water
- Standard with 44" hose
- Standard with 990033 Spray Head
- Optional style Spray Heads available
- 12" Wall Bracket supplied - cut to size for installation

8" Wall & Deck Mount Pre-Rinse Units		
Model No.	Description	Wt. lbs.
908000-B	8" Wall Mount Pre-Rinse Unit with 12" wall bracket attached and 1/2" NPT female inlets	12
901080-B	8" Deck Mount Pre-Rinse Unit with 12" wall bracket attached and 1/2" NPT female inlets	12
Approximate Height 45"		



901080-B



990031



990032



990033

Spray Valve Assembly		
Model No.	Description	Weight lbs.
990031	Pot filler spray valve assembly	2
990032	Angled spray valve assembly	2
990033	Pre-Rinse spray valve assembly, w/big bumper rubber ring & face plate	2

4" Deck Mount Pre-Rinse Units

- A 3-ply, 400 PSI test hose
- Integral spring check valves to prevent cross-flow of hot and cold water
- Standard with 44" hose
- Standard with 990033 Spray Head
- Optional style Spray Heads available
- 12" Wall Bracket supplied - cut to size for installation

4" Wall & Deck Mount Pre-Rinse Units		
Model No.	Description	Wt. lbs.
901000-B	4" Deck Mount Pre-Rinse Unit with 12" wall bracket attached and ½" NPT female inlets	12
901040-B	4" Deck Mount Pre-Rinse Unit with 12" wall bracket attached and ½" NPT female inlets	12
Approximate Height 45"		



901000-B



901040-B



990031



990032



990033

Spray Valve Assembly		
Model No.	Description	Weight lbs.
990031	Pot filler spray valve assembly	2
990032	Angled spray valve assembly	2
990033	Pre-Rinse spray valve assembly, w/big bumper rubber ring & face plate	2



908010-B

Single Wall & Deck Mount Pre-Rinse Units

- A 3-ply, 400 PSI test hose
- Integral spring check valves to prevent cross-flow of hot and cold water
- Standard with 44" hose
- Standard with 990033 Spray Head
- Optional style Spray Heads available
- 12" Wall Bracket supplied - cut to size for installation

Single Mount Pre-Rinse Units		
Model No.	Description	Wt. lbs.
908010-B	Single Wall Mount Pre-Rinse Unit with 12" wall bracket attached and 1/2" NPT MALE inlet	12
901010-D	Single Deck Mount Pre-Rinse Unit with 12" wall bracket attached and Universal 1/4" NPT or 1/2" NPS inlet	12
Approximate Height 45"		



901010-D



990031



990032



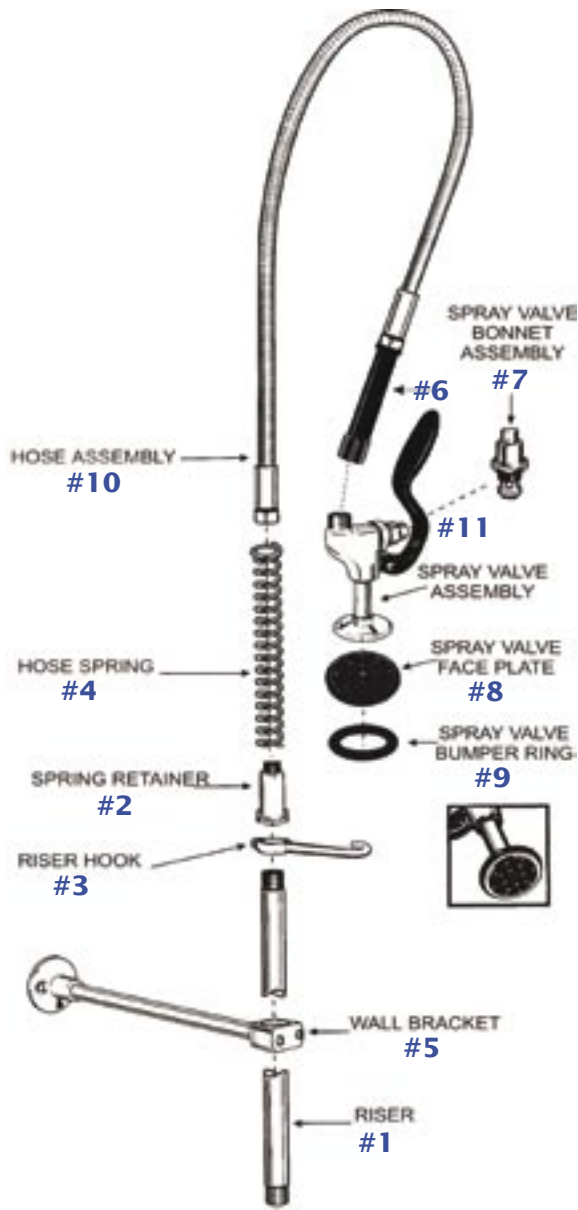
990033

Spray Valve Assembly		
Model No.	Description	Weight lbs.
990031	Pot filler spray valve assembly	2
990032	Angled spray valve assembly	2
990033	Pre-Rinse spray valve assembly, w/big bumper rubber ring & face plate	2

Pre-Rinse Parts

PRERINSE UNITS Feature:

- Quality engineering, design and craftsmanship
- Heavy Duty brass and forged brass body construction
- Chrome polished finish



HOSE Features:

- 3-Ply, 400 PSI Test Hose
- 210 °F/99 °C rated
- Stainless steel outer jacket
- Stainless steel collars for added durability



	Model No.	Description
#1	909001	24" Riser
#2	909002	Spring Retainer
#3	909003	Riser Hook
#4	909004	Hose Spring
#5	909005	12" Wall Bracket
#6	909006	Hose Grip
#7	909007	Spray Valve Bonnet Assembly
#8	909008P	Plastic Spray Valve Face Plate
	909008	Brass Spray Valve Face Plate
#9	909009S	Small-Spray Valve Bumper Ring
	909009B	Big-Spray Valve Bumper Ring
#10	909011	44" Hose Assembly With Grip
	909012	60" Hose Assembly With Grip
	909013	72" Hose Assembly With Grip
#11	990030	Pre-Rinse Spray Valve Assembly
#12	HR	Handle Ring (Not Shown)
#13	PK	Parts Kit (Not Shown)



909106B

Add-On Faucet

- Heavy-duty design and engineering
- Brass construction and polished chrome body
- Double O-Ring swivel spout
- 3/8" NPT MALE inlet and FEMALE outlet

Model No.	Spout Size (inches)	Wt. lbs.
909106B	6	2
909108B	8	2
909110B	10	2
909112B	12	2
909114B	14	2
909116B	16	2



702014B

Chinese Range Faucet

- Heavy-duty design and engineering
- Brass construction and polished chrome body
- Heavy-duty Double O-Ring swivel spout
- 1/2" NPS and NPT MALE inlet
- Chrome plated brass flange

Model No.	Spout Size (inches)	Wt. lbs.
702006B	6	2
702008B	8	2
702010B	10	2
702012B	12	2
702014B	14	2
702016B	16	2



805002B

1/4 Turn Full On

8" Heavy-Duty Wall Mount Faucet

- Integral spring check valves to prevent cross-flow of Hot and Cold water
- Brass construction and polished chrome body
- Heavy-duty double O-Ring swivel spout
- Colour coded Red and Blue handles
- 1/2" NPT Female inlets



805012B

Model No.	Spout Size (inches)	Wt. lbs.
805001B	3 1/2" Gooseneck	4
805002B	5" Gooseneck	4
805003B	8 1/2" Gooseneck	4
805006B	6	4
805008B	8	4
805010B	10	6
805012B	12	6
805014B	14	6
805016B	16	6

8" Commercial Duty Wall Mount Faucet

- Reinforced Double O-Ring Valves with Hot and Cold marked stems
- Brass construction and polished chrome body
- Heavy-duty double O-Ring swivel spout
- Colour coded Red and Blue handles
- ½" NPT FEMALE inlets

Model No.	Spout Size (inches)	Wt. lbs.
807001B	3½" Gooseneck	3
807002B	5" Gooseneck	3
807003B	8½" Gooseneck	3
807006B	6	3
807008B	8	3
807010B	10	3
807012B	12	3
807014B	14	3
807016B	16	3



807002B

**Commercial Duty
8" Lever Handle
Faucets**



807012B

4" Backsplash Wall Mount Faucet

- Reinforced Double O-Ring Valves with Hot and Cold marked stems
- High commercial quality designed for hand sinks
- Brass construction and polished chrome body
- Heavy-duty double O-Ring swivel spout
- Colour coded Red and Blue handles
- ½" NPT MALE inlets

Knob Handle Model No.	Lever Handle Model No.	Spout Size (inches)	Weight lbs.
406101A	406301B	3½" Gooseneck	2/4
406102A	406302B	5" Gooseneck	2/4
406103A	406303B	8½" Gooseneck	2/4
406106A	406306B	6	2/4
406108A	406308B	8	2/4
406110A	406310B	10	3/6
406112A	406312B	12	3/6
406114A	406314B	14	3/6
406116A	406316B	16	3/6



406301B

**Heavy Duty 4"
Lever Handle
Faucets**

**1/4 Turn
Full On**



406306B



406101A

**4" Knob Handle
Faucets**



406106A



808001B

1/4 Turn Full On



808012B

8" Heavy-Duty Deck Mount Faucet

- Integral spring check valves to prevent cross-flow of Hot and Cold water
- Brass construction and polished chrome body
- Heavy-duty double O-Ring swivel spout
- Colour coded Red and Blue handles
- 1/2" NPT FEMALE inlets

Model No.	Spout Size (inches)	Wt. lbs.
808001B	3 1/2" Gooseneck	4
808002B	5" Gooseneck	4
808003B	8 1/2" Gooseneck	4
808006B	6	4
808008B	8	4
808010B	10	6
808012B	12	6
808014B	14	6
808016B	16	6



408001B



408012B

4" Heavy-Duty Deck Mount Faucet

- Integral spring check valves to prevent cross-flow of Hot and Cold water
- Brass construction and polished chrome body
- Heavy-duty double O-Ring swivel spout
- Colour coded Red and Blue handles
- 1/2" NPT FEMALE inlets

Model No.	Spout Size (inches)	Wt. lbs.
408001B	3 1/2" Gooseneck	4
408002B	5" Gooseneck	4
408003B	8 1/2" Gooseneck	4
408006B	6	4
408008B	8	4
408010B	10	6
408012B	12	6
408014B	14	6
408016B	16	6

Single Deck Faucet with Temperature Mixing Valve

- Heavy-duty brass construction and polished chrome body
- Heavy-duty double O-Ring swivel spout

Temperature Mixing Valve

Description: Temperature Mixing Valve allows faucet water temperature to be pre-set and can be installed on any deck mount single inlet faucet or pre-rinse unit and includes:

- Built-in adjustable flow controls
- Built-in ball checks
- ½" FEMALE NPT Outlet
- Universal ¼" NPT or ½" NPS MALE Inlet

Model No.	Spout Size (inches)	Wt. lbs.
101201B	3½" Gooseneck	4
101202B	5" Gooseneck	4
101203B	8½" Gooseneck	4
101206B	6	4
101208B	8	4
101210B	10	6
101212B	12	6
101214B	14	6
101216B	16	6
909020	Temperature Mixing Valve	2



Automatic Electronic Deck Mount Mixing Faucet

- Heavy-duty brass construction and polished chrome body
- Sealed waterproof construction
- Reliable solid state electronic circuitry

Valve features the following:

- Built-in adjustable flow controls
- An infrared sensor detects the presence of an object in front of the unit and turns water On and Off
- Universal ¼" NPT or ½" NPS MALE inlets

Model No.	Spout Size (inches)	Wt. lbs.
100201	3½" Gooseneck	10
100202	5" Gooseneck	10
100206	6	10



Specifications	
Power	Four DC AA Alkaline Batteries or AC/DC Alternately
Working Pressure	0.2 - 15kg/cm2
Ambient Temp. Range	2 - 90° Celsius
Sensing Distance	2 - 17 cm (default 17cm)
Sensing Range Set-Up	Digital
Response Time	0.3 - 0.6 seconds (default 0.3 seconds)
Off Delay Time	1 - 2 seconds ((default 1 second)
Fresh Battery Life Cycle	500,000 On/Off
Low Battery Indicator	Red LED Flash
Battery Weakness	Red LED on, CPU off

Plumbing Fixtures Waste Units



301101T



302101T



303101T

Twist Handle Waste

- Heavy-duty nickel plated bronze body construction
- Stainless steel strainer, handle and 4 3/8" diameter flange
- Stainless steel 4 3/8" diameter flange
- Drain outlet 1 1/2" NPS - Overflow outlet 1/4"

Model No.	Description	Sink Opening inches	Drain Outlet inches	Wt. lbs.
301101T	Twist Handle Waste	3.5	1.5	2
302101T	Twist Handle Waste with Overflow Outlet	3.5	1.5	2
303101T	Twist Handle Waste with Overflow Assembly	3.5	1.5	2

Overflow Head

Model No.	Description	Wt. lbs.
300010	Nickel Plated Brass body, stainless face plate - Fits 1 1/4" O. D. Tubing	2



300010

Overflow Tube

Model No.	Spout Size (inches)	Wt. lbs.
309100	7" Long Brass Overflow Tube for 1" Sink Opening	2
309101	9" Long Brass Overflow Tube for 1" Sink Opening	2
309200	7 1/2" Long Brass Overflow Tube for 1 1/2" Sink Opening	2
309201	10" Long Brass Overflow Tube for 1 1/2" Sink Opening	2
309203	12" Long Brass Overflow Tube for 1 1/2" Sink Opening	2



309203



309101

Universal Nozzles

SINGLE SPOUTS

- Double O-Ring, swivel spout
- Brass Base, polished chrome finish
- ½" NPS MALE inlet
- Compression nut and washer attached

Model No.	Spout Size inches	Description	Weight lbs.
703101	3.5	Gooseneck spout	2
703102	5	Gooseneck spout	2
703103	8.5	Gooseneck spout	2
703106	6	Straight spout	2
703108	8	Straight spout	2
703110	10	Straight spout	2
703112	12	Straight spout	2
703114	14	Straight spout	2
703116	16	Straight spout	2



703103



703114

DOUBLE JOINTED SPOUTS

- Heavy-Duty Double O-Ring, swivel spout
- Six inch joint

Model No.	Spout Size inches	Description	Weight lbs.
2001CP01	3.5	Gooseneck spout	3
2001CP02	5	Gooseneck spout	3
2001CP03	8.5	Gooseneck spout	3
2001CP06	6	Straight spout length 6"	3
2001CP08	8	Straight spout length 8"	3
2001CP10	10	Straight spout length 10"	3
2001CP12	12	Straight spout length 12"	3
2001CP14	14	Straight spout length 14"	3
2001CP16	16	Straight spout length 16"	3
2001CP18	18	Spout length 18" (6" joint+12" spout)	3



2001CP18



550



551



560



561

Shanks

Model No.	Size & Finish	Outlet size (inches)	Inlet size inches	Wt. lbs.
550	Heavy-duty polished chrome finish, brass round shank	1 1/32 - 14 UNS FEMALE outlet	1/2 - NPS MALE	2
551	Heavy-duty polished chrome finish, brass - 2 7/8" long hex shank with adjustable forged brass hex flange nut attached	1/8 NPT FEMALE outlet on hex shank and 1 1/32 - 14 UNS FEMALE outlet	1/2 - NPS MALE	2
560	Heavy-duty polished chrome finish, brass round shank with adjustable forged brass hex flange nut attached	1 1/32 - 14 UNS FEMALE outlet	1/2 - NPS MALE	2
561	Heavy-duty polished chrome finish, brass - 2 7/8" long hex shank with adjustable forged brass hex flange nut attached	1/8 NPT FEMALE outlet on hex shank and 1 1/32 - 14 UNS FEMALE outlet	1/2 - NPS MALE	2



304003

304004

304004-P

304003-P

Sink Drains

Model No.	Size & Finish	Face Flange Dia. (inches)	Length inches	Weight lbs.
304003	1" NPS - Brass Finish	2	1.5	2
304004	1" NPS - Brass Finish	2	3.25	2
304004-P	1" NPS - Chrome Plated	2	3.25	2
304003-P	1" NPS - Chrome Plated	2	1.5	2
*Locknut and washer attached				



Stainless Steel Drain Baskets

Model No.	Description	Sink Opening inches	NPS Outlet inches	Weight lbs.
309001	Duo-Basket Strainer w/chrome plated post, rolled edge basket & rubber seal	3.5	1.5	2
309002	Mini-Basket Strainer w/chrome plated post, rolled edge basket & rubber seal	1 7/8	1.5	2
309007	3½" Replacement basket strainer w/chrome plated post, rubber seal	Fits all standard drains		2
300000	Drain assembly for use with Overflow Tube	1.75	1.5	2
309004	Clamp basket Strainer w/two brass nuts and 4.5" face diameter w/2 zinc nuts	3.5	1.5	2
990020 not shown	Atmospheric Vacuum Breaker maintains high water flow with minimum pressure loss. Has high heat resistance and Temperature capability of up to 210 °F (99°C)			2
303005	Heavy-duty nickel plated brass Drain Outlet Reducer Bushing, with 2" FEMALE NPT and 1.5" MALE NPT			2



203100



203200



203400C



203000



203300



203500H



500



501



308001

Miscellaneous

Model No.	Description	Inlet Size inches	Outlet Size inches
203000	Double Foot Pedal, heavy-duty brass construction and rough chrome plated body, self-closing valves, reinforced Double O-Ring valves, and extra long and wide stainless steel pedals for easy operation	(2) ½ MALE NPS	(1) 3/8 FEMALE NPT
203100	Double Knee Pedal, heavy-duty brass construction and rough chrome plated body, self closing valves, reinforced Double O-Ring valves, and extra long and wide stainless steel pedals for easy operation	(2) ½ MALE NPS	(1) 3/8 FEMALE NPT
203200	Double Foot Pedal with rough chrome plated body, self-closing valves, Blue (cold) and Red (hot) indexed, polished chrome finish brass pedals	(2) ½ FEMALE NPT	(1) ½ FEMALE NPT
203300	Double Knee Pedal with rough chrome plated body, self-closing valves, Blue (cold) and Red (hot) indexed, polished chrome finish brass pedals	(2) ½ FEMALE NPT	(1) ½ FEMALE NPT
203400C	Single Foot Pedal with rough chrome plated body, self-closing valve, Blue (cold) or Red (hot) indexed, polished chrome finish brass pedal	½ FEMALE NPT	½ FEMALE NPT
203400H			
203500C	Single Knee Pedal with rough chrome plated body, self-closing valve, Blue (cold) or Red (hot) indexed, polished chrome finish brass pedal	½ FEMALE NPT	½ FEMALE NPT
203500H			
500	Standard Beverage Dispensing Faucet with heavy-duty forged brass body, polished chrome finish	1 1/32 - 14UNS MALE	N/A
501	Mini Beverage Dispensing Faucet with heavy-duty forged brass body, polished chrome finish	1 1/32 - 14UNS MALE	N/A
308001	Commercial Liquid Soap Dispenser with plastic globe, chrome finish spout and gravity type flow	Overall size: 6 1/2L x 3 7/8 W x 5 3/16 D Liquid soap capacity - 16 oz.	

Work Centres



Designed for Prep and Bakery applications, Tarrison's Work Centres will maximize your working space efficiently and cost-effectively. It's easy and so affordable, so why not create your own customized work centre (as shown above), by combining any of the Tarrison options shown here. Pre-drilled holes that accept a clamping device on the side allow units to be banked together easily.

All Tarrison Work Centres are built with Tarrison's high quality wire shelving and posts. Stainless steel tops have 1.5" bull nose front, knife edge and two heavy-duty reinforcement under-channels.

Standard Prep Work Centre

OPTION 1 Features:

- 16 Gauge 304 series stainless steel top with 4 inch backsplash
- One undershelf
- One 3-sided frame
- Working height is 35 inches
- Front posts 34 inches high, rear posts 38 inches high

PolySeal Model No.	Chrome Model No.	Size D" x L"	Weight lbs.
WC3036UZ	WC3036UC	30 x 36	77.0
WC3042UZ	WC3042UC	30 x 42	86.0
WC3048UZ	WC3048UC	30 x 48	95.0
WC3054UZ	WC3054UC	30 x 54	106.0
WC3060UZ	WC3060UC	30 x 60	116.0
WC3066UZ	WC3066UC	30 x 66	126.0
WC3072UZ	WC3072UC	30 x 72	137.0

Sizes nominal, detailed specifications available upon request.
Specifications subject to change without notice.

Option 1



Shown with optional accessories and additional undershelf.

Standard Prep Work Centre

OPTION 2 Features:

- 16 Gauge 304 series stainless steel top with 4 inch backsplash
- Two 3-sided frames
- Working height is 35 inches
- Front posts 34 inches high, rear posts 38 inches high

PolySeal Model No.	Chrome Model No.	Size D" x L"	Weight lbs.
WC3036FZ	WC3036FC	30 x 36	72.0
WC3042FZ	WC3042FC	30 x 42	80.0
WC3048FZ	WC3048FC	30 x 48	89.0
WC3054FZ	WC3054FC	30 x 54	98.0
WC3060FZ	WC3060FC	30 x 60	107.0
WC3066FZ	WC3066FC	30 x 66	116.0
WC3072FZ	WC3072FC	30 x 72	125.0



Standard Prep Work Centre

OPTION 3 Features:

- 16 Gauge 304 series stainless steel top with 4 inch backsplash
- One undershelf
- One cantilever style overshelf
- Working height is 35 inches
- Front posts 34 inches high, rear posts 63 inches high

PolySeal Model No.	Chrome Model No.	Size D" x L"	Weight lbs.
WC3036UOZ	WC3036UOC	30 x 36	83.0
WC3042UOZ	WC3042UOC	30 x 42	84.0
WC3048UOZ	WC3048UOC	30 x 48	105.0
WC3054UOZ	WC3054UOC	30 x 54	115.0
WC3060UOZ	WC3060UOC	30 x 60	126.0
WC3066UOZ	WC3066UOC	30 x 66	138.0
WC3072UOZ	WC3072UOC	30 x 72	149.0



**Customize your own Work Centre -
call your Tarrison Representative**

Work Centres

Standard Prep Work Centre

OPTION 4 Features:

- 16 Gauge 304 series stainless steel top with 4 inch backsplash
- Two 3-sided frames
- One cantilever overshelf
- Working height is 35 inches
- Front posts 34 inches high, rear posts 63 inches high

PolySeal Model No.	Chrome Model No.	Size D" x L"	Weight lbs.
WC3036FOZ	WC3036FOC	30 x 36	78.0
WC3042FOZ	WC3042FOC	30 x 42	87.0
WC3048FOZ	WC3048FOC	30 x 48	97.0
WC3054FOZ	WC3054FOC	30 x 54	107.0
WC3060FOZ	WC3060FOC	30 x 60	117.0
WC3066FOZ	WC3066FOC	30 x 66	127.0
WC3072FOZ	WC3072FOC	30 x 72	137.0

Work Centre Accessories	
Back Grid Plate	Shelf Divider
Cantilever Shelf	Shelf Ledge
Document Holder	Small Grid Shelf
Foot Plates	Solid Stainless Shelf
Hanger Rail	Spice Rack
Post Wall Bracket	Stainless Steel Drawer
"J" Hook Small	Tray Slide Inserts
"J" Hook Double	Adjustable Post Bracket
"J" Hook Large	Utility Basket
See Next Page	

Corner/End Units for Work Centres

- Eliminate the need for costly permanent wall treatment
- Provides a clean finish on both or either side of the work centre space
- #304 series 16 gauge stainless steel top with 4 inch backsplash
- Working height is 35 inches
- Front posts 34 inches high, rear posts 38 inches high
- Edge is bullnosed for safety

Description	PolySeal Model No.	Chrome Model No.	Size W" x L"	Weight lbs.
Left End Unit	WCTLE30Z	WCTLE30C	30 x 30	60
Right End Unit	WCTRE30Z	WCTRE30C	30 x 30	60

Option 4



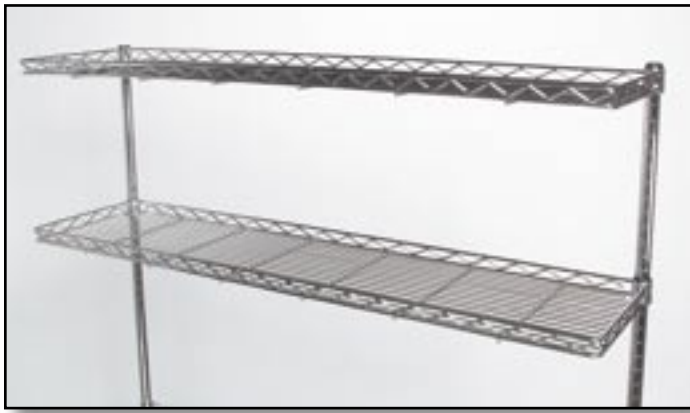
WC3048FOC



Shown with optional accessories.



Left End Unit shown



Cantilever Shelf

- Shelves have a 1" high protective "rail style" edge to prevent contents from falling off

Size W" x L"	PolySeal Model No.	Chrome Model No.
12 x 24	CS1224Z	CS1224C
12 x 30	CS1230Z	CS1230C
12 x 36	CS1236Z	CS1236C
12 x 42	CS1242Z	CS1242C
12 x 48	CS1248Z	CS1248C
12 x 54	CS1254Z	CS1254C
12 x 60	CS1260Z	CS1260C
12 x 66	CS1266Z	CS1266C
12 x 72	CS1272Z	CS1272C

Order posts separately, plastic clips included.



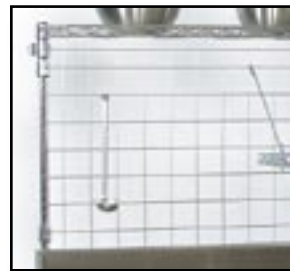
Solid Stainless Steel Shelf
see page 41



Spice Rack
see page 61



Shelf Ledge
see page 68



Back Grid Plate
see page 69



Small Grid Shelf
see page 61



Hanger Rail
see page 68



Tray Slide Inserts
see page 69



Shelf Divider
see page 68



Adjustable Post Bracket System
see page 59



Document Holder
see page 69



Stainless Steel Drawer Assembly
see page 11

Utility Basket
see page 72



Double "J" Hook
see page 70



Large "J" Hook
see page 70



Small "J" Hook
see page 70



Wire "S" Hook
see page 70



Post Wall Bracket
see page 73

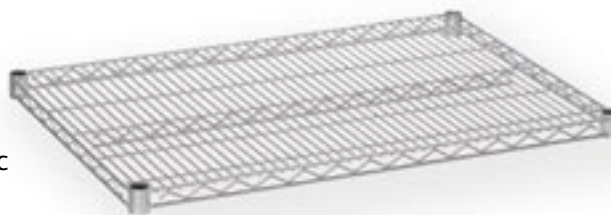


Foot Plates
see page 71

Shelves

Wire Shelves

Tarrison shelves are of the highest quality. A variety of sizes and finishes allow you to customize your shelving system easily to meet your needs. Shelves include plastic clips.



Wire Shelves					
Size D" x L"	PolySeal Model No.	Chrome Model No.	Stainless Steel Model No.	Value Epoxy* Model No.	Weight lbs.
14 x 24	S1424Z	S1424C	S1424S	S1424EB	6.0
14 x 30	S1430Z	S1430C	S1430S	S1430EB	7.0
14 x 36	S1436Z	S1436C	S1436S	S1436EB	8.0
14 x 42	S1442Z	S1442C	S1442S	S1442EB	9.5
14 x 48	S1448Z	S1448C	S1448S	S1448EB	10.5
14 x 54	S1454Z	S1454C	S1454S	S1454EB	12.0
14 x 60	S1460Z	S1460C	S1460S	S1460EB	14.0
14 x 66	S1466Z	S1466C	S1466S	S1466EB	15.5
14 x 72	S1472Z	S1472C	S1472S	S1472EB	17.0
18 x 18	S1818Z	S1818C	S1818S	S1818EB	6.0
18 x 24	S1824Z	S1824C	S1824S	S1824EB	7.0
18 x 30	S1830Z	S1830C	S1830S	S1830EB	8.0
18 x 36	S1836Z	S1836C	S1836S	S1836EB	9.5
18 x 42	S1842Z	S1842C	S1842S	S1842EB	11.0
18 x 48	S1848Z	S1848C	S1848S	S1848EB	12.0
18 x 54	S1854Z	S1854C	S1854S	S1854EB	14.5
18 x 60	S1860Z	S1860C	S1860S	S1860EB	17.0
18 x 66	S1866Z	S1866C	S1866S	S1866EB	18.5
18 x 72	S1872Z	S1872C	S1872S	S1872EB	20.0
21 x 24	S2124Z	S2124C	S2124S	S2124EB	8.0
21 x 30	S2130Z	S2130C	S2130S	S2130EB	9.0
21 x 36	S2136Z	S2136C	S2136S	S2136EB	11.0
21 x 42	S2142Z	S2142C	S2142S	S2142EB	12.0
21 x 48	S2148Z	S2148C	S2148S	S2148EB	14.0
21 x 54	S2154Z	S2154C	S2154S	S2154EB	16.0
21 x 60	S2160Z	S2160C	S2160S	S2160EB	18.0
21 x 66	S2166Z	S2166C	S2166S	S2166EB	20.0
21 x 72	S2172Z	S2172C	S2172S	S2172EB	22.0
24 x 24	S2424Z	S2424C	S2424S	S2424EB	9.0
24 x 30	S2430Z	S2430C	S2430S	S2430EB	11.0
24 x 36	S2436Z	S2436C	S2436S	S2436EB	13.0
24 x 42	S2442Z	S2442C	S2442S	S2442EB	15.0
24 x 48	S2448Z	S2448C	S2448S	S2448EB	16.0
24 x 54	S2454Z	S2454C	S2454S	S2454EB	19.0
24 x 60	S2460Z	S2460C	S2460S	S2460EB	21.0
24 x 66	S2466Z	S2466C	S2466S	S2466EB	23.5
24 x 72	S2472Z	S2472C	S2472S	S2472EB	26.0

Value Epoxy available in standard Black

Posts

Tarrison Posts are clearly numbered and come with adjustable leveling bolts and top post cap. One-inch round steel tubing. Posts are grooved on one inch increments for easy set-up.



Note: 6", 14", 28" and 34" posts are not numbered.

Posts					
Size H"	PolySeal Model No.	Chrome Model No.	Stainless Steel	Value Epoxy Model No.	Weight lbs.
6	P6Z	P6C	P6S	P6EB	.5
14	P14Z	P14C	P14S	P14EB	1.0
28	P28Z	P28C	P28S	P28EB	2.0
34	P34Z	P34C	P34S	P34EB	3.0
54	P54Z	P54C	P54S	P54EB	3.5
63	P63Z	P63C	P63S	P63EB	4.0
69	P69Z	P69C	P69S	P69EB	4.0
74	P74Z	P74C	P74S	P74EB	4.5
81	P81Z	P81C	P81S	P81EB	5.0
86	P86Z	P86C	P86S	P86EB	5.0
96	P96Z	P96C	P96S	P96EB	6.0

*Value Epoxy posts not numbered, but are etched to facilitate set up. Available in standard black.



**ALL PRODUCTS
AVAILABLE IN ANY
FINISH OR COLOUR**
May require a minimum quantity ordered

Flex Mount Shelving

- The revolutionary Flex Mount shelving allows easy shelf removal, insertion or height adjustment, without having to remove other shelves on the unit
- The use of Tarrison standard collar shelving is required for the top and bottom shelves
- To insert a shelf, slide the Flex Mount collar up, move the Tarrison clips to the desired position on the numbered post, re-position the Flex Mount Collar and insert the shelf
- No special posts are required. The Flex Mount Shelving System uses standard Tarrison Posts
- The Flex Mount shelving is for intermediate use only
- Maximize flexibility to ensure maximum space usage!

Size D" x L"	PolySeal Model No.	Weight lbs.
18 x 30	SFM1830Z	8
18 x 36	SFM1836Z	9.5
18 x 48	SFM1848Z	12
18 x 60	SFM1860Z	17
24 x 36	SFM2436Z	13
24 x 42	SFM2442Z	15
24 x 48	SFM2448Z	16
24 x 54	SFM2454Z	19
24 x 60	SFM2460Z	21
Size D" x L"	Chrome Model No.	Weight lbs.
24 x 48	SFM2448C	16
24 x 60	SFM2460C	21

Additional sizes available. May require a minimum quantity ordered.
Order posts separately



Wide Span Shelf

- 30" and 36" deep durable wire shelving is reinforced for extra strength with additional side-to-side welded trusses
- Wide Span shelving offers convenient access from all sides
- Shelf Capacity is 600 lb.

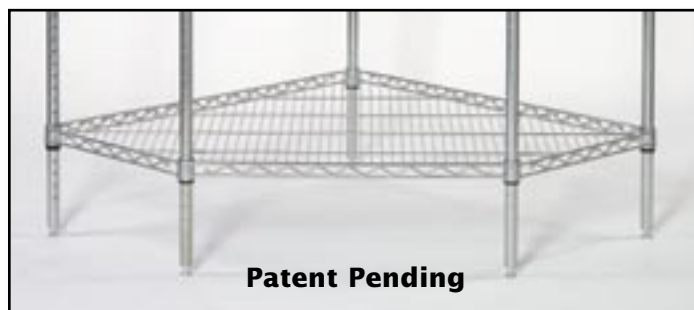


Threaded
Stem Caster
5" x 1.25"
see page 72



Size D" x L"	PolySeal Model No.	Chrome Model No.	Weight lbs.
30 x 36	S3036Z	S3036C	16
30 x 48	S3048Z	S3048C	20
30 x 60	S3060Z	S3060C	24
30 x 72	S3072Z	S3072C	28
36 x 36	S3636Z	S3636C	17.5
36 x 48	S3648Z	S3648C	22
36 x 60	S3660Z	S3660C	26.5
36 x 72	S3672Z	S3672C	31

Available in any finish or colour. May require a minimum quantity ordered.



5-Sided Shelf

- Put unused corner space to work
- Shelf sizes correspond to width of shelving for add-on capability

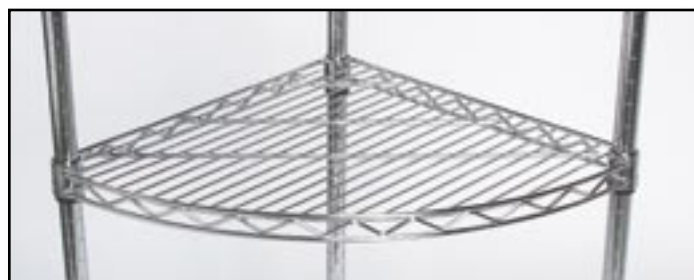
Size D" x L"	PolySeal Model No.	Weight lbs.
18 x 36	S51836Z	12
21 x 36	S52136Z	14
24 x 42	S52442Z	18
See page 44 for Chrome. Order posts separately (5)		



Triangular Shelf

- Put unused corner space to work
- Shelf sizes match width of shelving for Add-Ons

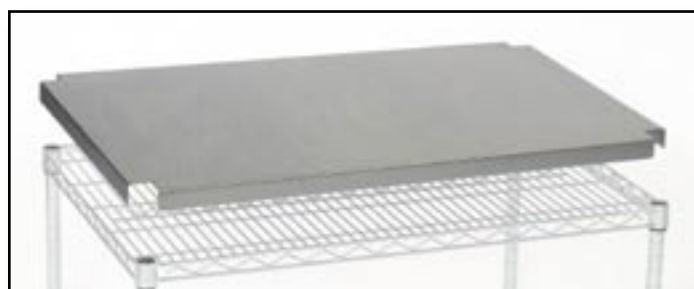
Size D"	Chrome Model No.	Weight lbs.
18	ST18C	7
24	ST24C	10



Quarter Round Shelf

- The ideal choice for product display showcases
- All the benefits of a triangular shelf, but with a roundtruss for increased storage aesthetics

Size D"	Chrome Model No.	Weight lbs.
18	SQ18C	7.5
24	SQ24C	10.5



Stainless Steel Overlay Shelf

- Use Overlays where spillage is a concern
- Also used on bottom shelves to prevent dust flare up

Size D" x L"	Model No.	Weight lbs.
18 x 36	OL1836S	7
18 x 48	OL1848S	10
18 x 60	OL1860S	13
24 x 36	OL2436S	10
24 x 48	OL2448S	13
24 x 60	OL2460S	16
Other sizes on request. Order under shelf separately.		



Coming in 2006

Expand-a-Shelf

- Eliminates wasted space in cooler, freezer and dry storage applications

Size D" x L"	Model No.	Expands From - To	Weight lbs.
14 x 24	ES1424Z	19 to 24"	7
14 x 30	ES1430Z	25 to 30"	8
18 x 24	ES1824Z	19 to 24"	8
18 x 30	ES1830Z	25 to 30"	9
21 x 24	ES2124Z	19 to 24"	9
21 x 30	ES2130Z	25 to 30"	10
24 x 24	ES2424Z	19 to 24"	10
24 x 30	ES2430Z	25 to 30"	12



Solid Stainless Steel Shelf

- #304 series 18-gauge stainless steel construction
- Can be combined with other Tarrison shelves on a unit
- Ideal as bottom shelf on your Tarrison Work Centre

Size D" x L"	Stainless Steel Model No.	Weight lbs.
18 x 36	S1836SS	16
18 x 42	S1842SS	20
18 x 48	S1848SS	24
18 x 60	S1860SS	26
24 x 36	S2436SS	31
24 x 42	S2442SS	36
24 x 48	S2448SS	41
24 x 60	S2460SS	48
30 x 48	S3048SS	54

Additional sizes available. May require a minimum quantity ordered.

3-Sided Frame

- See page 46

Channel Dunnage Shelf

- Ideal for heavy-duty dunnage applications such as storing bagged and cased goods
- Shelf capacity up to 1,500 lbs.
- One inch square steel tubing shelf construction
- Dunnage Rack Centre Support available to add increased strength on longer lengths - see page 47
- Ideal as bottom shelf on shelving units

Size D" x L"	PolySeal Model No.	Weight lbs.	Size D" x L"	PolySeal Model No.	Weight lbs.
14 x 36	DF41436Z	22	24 x 24	DF42424Z	21
14 x 48	DF41448Z	30	24 x 30	DF42430Z	26
18 x 24	DF41824Z	16	24 x 36	DF42436Z	32
18 x 30	DF41830Z	20	24 x 42	DF42442Z	37
18 x 36	DF41836Z	24	24 x 48	DF42448Z	43
18 x 48	DF41848Z	32	24 x 54	DF42454Z	47
18 x 60	DF41860Z	38	24 x 60	DF42460Z	52
18 x 66	DF41866Z	42	24 x 66	DF42466Z	57
18 x 72	DF41872Z	48	24 x 72	DF42472Z	62



Shown with optional Dunnage Shelf

Dunnage Shelf Mat

- Removable optional mesh wire decking adds strength to your Dunnage Shelf
- Unique grid design allows for storage of smaller items

Size D" x L"	PolySeal Model No.	Weight lbs.	Size D" x L"	PolySeal Model No.	Weight lbs.
18 x 24	DWM1824Z	19	24 x 24	DWM2424Z	23
18 x 30	DWM1830Z	23	24 x 30	DWM2430Z	29
18 x 36	DWM1836Z	30	24 x 36	DWM2436Z	36
18 x 42	DWM1842Z	33	24 x 42	DWM2442Z	41
18 x 48	DWM1848Z	36	24 x 48	DWM2448Z	47
18 x 54	DWM1854Z	38	24 x 54	DWM2454Z	52
18 x 60	DWM1860Z	42	24 x 60	DWM2460Z	56
18 x 66	DWM1866Z	46	24 x 66	DWM2466Z	58
18 x 72	DWM1872Z	48	24 x 72	DWM2472Z	60



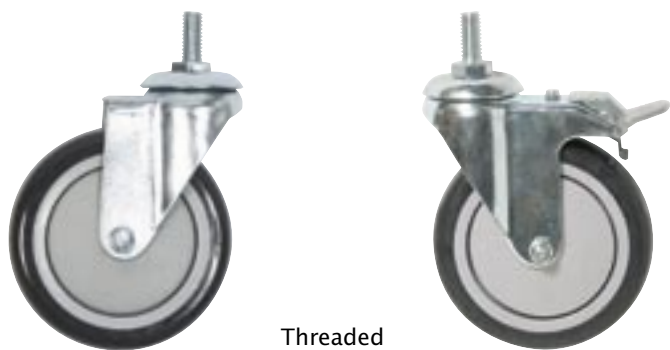
18486C

Starter Unit

- Develop a storage system with a Tarrison Starter Unit
- Each Starter Unit consists of four numbered posts, four shelves and plastic clips
- Convert Starter Units to Mobile Truck Units by simply adding four polyurethane threaded stem casters



18486C shown with optional casters



Threaded Stem Caster
5" x 1.25"

Threaded Stem Casters

- Threaded Polyurethane non-marking stem casters fit easily and securely into Tarrison posts to add mobility to stationary units
- Load rating 300 lbs. each; 1200 lbs. per unit
- No need to remove post inserts to add casters

Size inches	Swivel Model No.	Swivel w/Brake Model No.
3	C3SPS	C3SPB
4	C4SPS	C4SPB
5	C5SPS	C5SPB

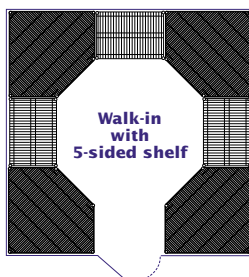
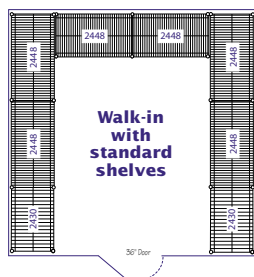
Starter Unit

Size	63" High Unit		74" High Unit		86" High Unit		Weight
D" x L"	PolySeal Model No.	Chrome Model No.	PolySeal Model No.	Chrome Model No.	PolySeal Model No.	Chrome Model No.	lbs. 63"/74"/86"
14 x 24	14246Z	14246C	14247Z	14247C	14248Z	14248C	38/40/44
14 x 30	14306Z	14306C	14307Z	14307C	14308Z	14308C	42/44/48
14 x 36	14366Z	14366C	14367Z	14367C	14368Z	14368C	46/48/52
14 x 42	14426Z	14426C	14427Z	14427C	14428Z	14428C	52/54/58
14 x 48	14486Z	14486C	14487Z	14487C	14488Z	14488C	58/60/64
14 x 54	14546Z	14546C	14547Z	14547C	14548Z	14548C	62/64/68
14 x 60	14606Z	14606C	14607Z	14607C	14608Z	14608C	72/74/78
14 x 66	14666Z	14666C	14667Z	14667C	14668Z	14668C	82/84/88
14 x 72	14726Z	14726C	14727Z	14727C	14728Z	14728C	88/90/94
18 x 18	18186Z	18186C	18187Z	18187C	18188Z	18188C	40/42/46
18 x 24	18246Z	18246C	18247Z	18247C	18248Z	18248C	42/44/48
18 x 30	18306Z	18306C	18307Z	18307C	18308Z	18308C	46/48/52
18 x 36	18366Z	18366C	18367Z	18367C	18368Z	18368C	52/54/58
18 x 42	18426Z	18426C	18427Z	18427C	18428Z	18428C	58/60/64
18 x 48	18486Z	18486C	18487Z	18487C	18488Z	18488C	62/64/68
18 x 54	18546Z	18546C	18547Z	18547C	18548Z	18548C	72/74/78
18 x 60	18606Z	18606C	18607Z	18607C	18608Z	18608C	82/84/88
18 x 66	18666Z	18666C	18667Z	18667C	18668Z	18668C	88/90/94
18 x 72	18726Z	18726C	18727Z	18727C	18728Z	18728C	94/96/100
21 x 24	21246Z	21246C	21247Z	21247C	21248Z	21248C	46/48/52
21 x 30	21306Z	21306C	21307Z	21307C	21308Z	21308C	50/52/56
21 x 36	21366Z	21366C	21367Z	21367C	21368Z	21368C	58/60/64
21 x 42	21426Z	21426C	21427Z	21427C	21428Z	21428C	62/64/68
21 x 48	21486Z	21486C	21487Z	21487C	21488Z	21488C	70/72/76
21 x 54	21546Z	21546C	21547Z	21547C	21548Z	21548C	78/80/84
21 x 60	21606Z	21606C	21607Z	21607C	21608Z	21608C	86/88/92
21 x 66	21666Z	21666C	21667Z	21667C	21668Z	21668C	98/100/104
21 x 72	21726Z	21726C	21727Z	21727C	21728Z	21728C	110/112/116
24 x 24	24246Z	24246C	24247Z	24247C	24248Z	24248C	50/52/56
24 x 30	24306Z	24306C	24247Z	24307C	24308Z	24308C	58/60/64
24 x 36	24366Z	24366C	24367Z	24367C	24368Z	24368C	66/68/72
24 x 42	24426Z	24426C	24427Z	24427C	24428Z	24428C	74/76/80
24 x 48	24486Z	24486C	24487Z	24487C	24488Z	24488C	78/80/84
24 x 54	24546Z	24546C	24547Z	24547C	24548Z	24548C	90/92/96
24 x 60	24606Z	24606C	24607Z	24607C	24608Z	24608C	98/100/104
24 x 66	24666Z	24666C	24667Z	24667C	24668Z	24668C	108/118/124
24 x 72	24726Z	24726C	24727Z	24727C	24728Z	24728C	118/120/124
Order casters separately							

- 1 Choose your size (including height)
- 2 Choose your finish
- 3 Add additional shelves on page 38 or Add-on units on page 45
- 4 Create a mobile unit with Threaded Stem Casters on page 42

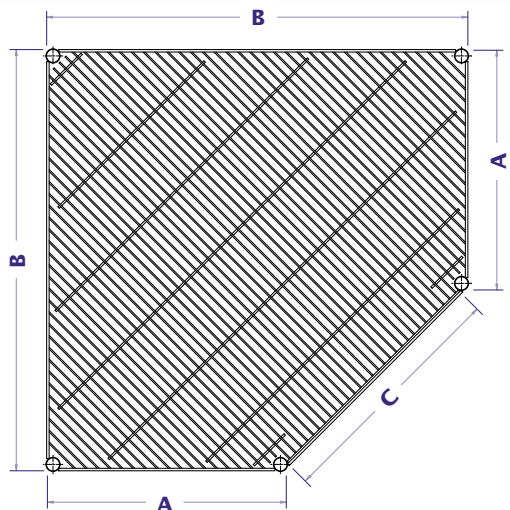


- Maximize your corner storage space with a Tarrison Corner Starter Unit
- Create more corner accessibility
- Each Corner Starter Unit consists of five posts, four 5-sided shelves and plastic clips
- Use Add-on Units on page 45 for additional storage



Size	63" High Unit		74" High Unit		86" High Unit		Weight
D" x L"	PolySeal Model No.	Chrome Model No.	PolySeal Model No.	Chrome Model No.	PolySeal Model No.	Chrome Model No.	lbs.
18 x 36	518366Z	518366C	518367Z	518367C	518368Z	518368C	68
21 x 36	521366Z	521366C	521367Z	521367C	521368Z	521368C	79
24 x 42	524426Z	524426C	524427Z	524427C	524428Z	524428C	97

Order casters separately



5-Sided Shelf

Model No.		Dimensions (inches)			Weight lbs.
		A	B	C	
Chrome	S51836C	18	36	24	12
Chrome	S52136C	21	36	20	14
Chrome	S52442C	24	42	24	18
PolySeal	S51836Z	18	36	24	12
PolySeal	S52136Z	21	36	20	14
PolySeal	S52442Z	24	42	24	18

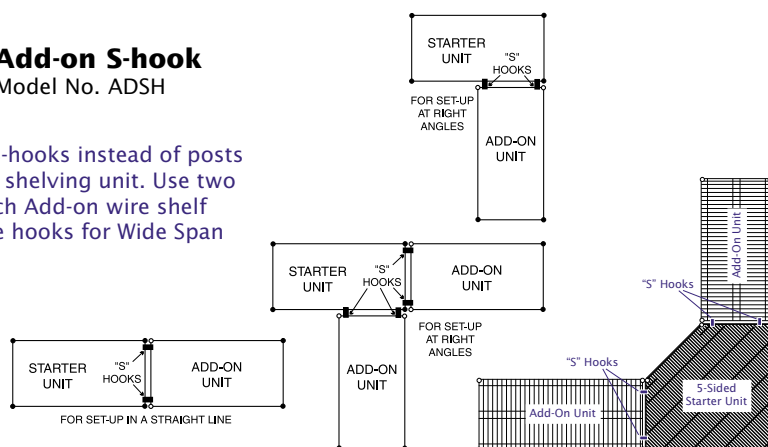
Add-On Unit

- Increase storage space with an Add-on Unit
- Each Add-On Unit consists of two posts, four shelves and plastic clips and eight S-Hooks
- S-Hook eliminates the need to purchase two additional posts



Add-on S-hook
Model No. ADSH

Use Add-on S-hooks instead of posts to grow your shelving unit. Use two hooks for each Add-on wire shelf and use three hooks for Wide Span shelving.



Size	63" High Unit		74" High Unit		86" High Unit		Weight
D" x L"	PolySeal Model No.	Chrome Model No.	PolySeal Model No.	Chrome Model No.	PolySeal Model No.	Chrome Model No.	lbs. 63"/74"/86"
14 x 24	A14246Z	A14246C	A14247Z	A14247C	A14248Z	A14248C	31/35/39
14 x 30	A14306Z	A14306C	A14307Z	A14307C	A14308Z	A14308C	35/39/43
14 x 36	A14366Z	A14366C	A14367Z	A14367C	A14368Z	A14368C	39/43/49
14 x 42	A14426Z	A14426C	A14427Z	A14427C	A14428Z	A14428C	45/49/53
14 x 48	A14486Z	A14486C	A14487Z	A14487C	A14488Z	A14488C	53/55/59
14 x 54	A14546Z	A14546C	A14547Z	A14547C	A14548Z	A14548C	55/59/63
14 x 60	A14606Z	A14606C	A14607Z	A14607C	A14608Z	A14608C	65/69/73
14 x 66	A14666Z	A14666C	A14667Z	A14667C	A14668Z	A14668C	75/79/83
14 x 72	A14726Z	A14726C	A14727Z	A14727C	A14728Z	A14728C	81/85/89
18 x 18	A18186Z	A18186C	A18187Z	A18187C	A18188Z	A18188C	32/36/40
18 x 24	A18246Z	A18246C	A18247Z	A18247C	A18248Z	A18248C	35/39/43
18 x 30	A18306Z	A18306C	A18307Z	A18307C	A18308Z	A18308C	39/43/47
18 x 36	A18366Z	A18366C	A18367Z	A18367C	A18368Z	A18368C	45/49/53
18 x 42	A18426Z	A18426C	A18427Z	A18427C	A18428Z	A18428C	51/55/59
18 x 48	A18486Z	A18486C	A18487Z	A18487C	A18488Z	A18488C	55/59/63
18 x 54	A18546Z	A18546C	A18547Z	A18547C	A18548Z	A18548C	65/69/73
18 x 60	A18606Z	A18606C	A18607Z	A18607C	A18608Z	A18608C	75/79/83
18 x 66	A18666Z	A18666C	A18667Z	A18667C	A18668Z	A18668C	78/82/85
18 x 72	A18726Z	A18726C	A18727Z	A18727C	A18728Z	A18728C	81/85/87
21 x 24	A21246Z	A21246C	A21247Z	A21247C	A21248Z	A21248C	39/43/47
21 x 30	A21306Z	A21306C	A21307Z	A21307C	A21308Z	A21308C	43/47/51
21 x 36	A21366Z	A21366C	A21367Z	A21367C	A21368Z	A21368C	51/55/59
21 x 42	A21426Z	A21426C	A21427Z	A21427C	A21428Z	A21428C	55/59/63
21 x 48	A21486Z	A21486C	A21487Z	A21487C	A21488Z	A21488C	63/67/71
21 x 54	A21546Z	A21546C	A21547Z	A21547C	A21548Z	A21548C	71/75/79
21 x 60	A21606Z	A21606C	A21607Z	A21607C	A21608Z	A21608C	79/83/87
21 x 66	A21666Z	A21666C	A21667Z	A21667C	A21668Z	A21668C	91/95/99
21 x 72	A21726Z	A21726C	A21727Z	A21727C	A21728Z	A21728C	103/107/111
24 x 24	A24246Z	A24246C	A24247Z	A24247C	A24248Z	A24248C	43/47/51
24 x 30	A24306Z	A24306C	A24307Z	A24307C	A24308Z	A24308C	51/55/59
24 x 36	A24366Z	A24366C	A24367Z	A24367C	A24368Z	A24368C	59/63/67
24 x 42	A24426Z	A24426C	A24427Z	A24427C	A24428Z	A24428C	67/71/75
24 x 48	A24486Z	A24486C	A24487Z	A24487C	A24488Z	A24488C	71/75/79
24 x 54	A24546Z	A24546C	A24547Z	A24547C	A24548Z	A24548C	83/87/91
24 x 60	A24606Z	A24606C	A24607Z	A24607C	A24608Z	A24608C	91/95/99
24 x 66	A24666Z	A24666C	A24667Z	A24667C	A24668Z	A24668C	101/105/109
24 x 72	A24726Z	A24726C	A24727Z	A24727C	A24728Z	A24728C	111/115/119

Order casters separately



Beer Keg Rack

- Time and space saver rack provides strong stable storage and features:
- Four Posts, numbered for quick set-up
- Two 1,500 lb. capacity Channel Dunnage Shelves
- Two 3-sided frames for added stability

Size D" x L" x H"	PolySeal Model No.	Weight lbs.
18 x 36 x 54	KR18365Z	76
18 x 48 x 54	KR18485Z	94
18 x 60 x 54	KR18605Z	108
18 x 36 x 63	KR18366Z	78
18 x 48 x 63	KR18486Z	96
18 x 60 x 63	KR18606Z	110

Additional sizes available.

3-Sided Frame

- Provides increased strength, stability and structural integrity of the shelving unit
- Constructed of 1" square tubing

Size D" x L" x H"	PolySeal Model No.	Chrome Model No.	Wt. lbs.
18 x 24	DF1824Z	DF1824C	5
18 x 30	DF1830Z	DF1830C	6
18 x 36	DF1836Z	DF1836C	7
18 x 42	DF1842Z	DF1842C	8
18 x 48	DF1848Z	DF1848C	8
18 x 60	DF1860Z	DF1860C	9
18 x 72	DF1872Z	DF1872C	12
24 x 24	DF2424Z	DF2424C	6
24 x 30	DF2430Z	DF2430C	7
24 x 36	DF2436Z	DF2436C	8
24 x 42	DF2442Z	DF2442C	9
24 x 48	DF2448Z	DF2448C	10
24 x 54	DF2454Z	DF2454C	11
24 x 60	DF2460Z	DF2460C	12
24 x 66	DF2466Z	DF2466C	13
24 x 72	DF2472Z	DF2472C	14

Additional sizes available.



Utility Rack

- Multi-purpose rack will prove invaluable for heavy storage requirements and includes:
- Four Posts, numbered for quick set-up
- Two 1,500 lb. capacity Channel Dunnage Shelves
- Two Dunnage Shelf Mats
- Two 3-Sided Frames for added stability

Size D" x L" x H"	PolySeal Model No.	Weight lbs.
18 x 36 x 54	CR18365Z	136
18 x 48 x 54	CR18485Z	166
18 x 60 x 54	CR18605Z	192
18 x 36 x 63	CR18366Z	138
18 x 48 x 63	CR18486Z	168
18 x 60 x 63	CR18606Z	194

Additional sizes available.

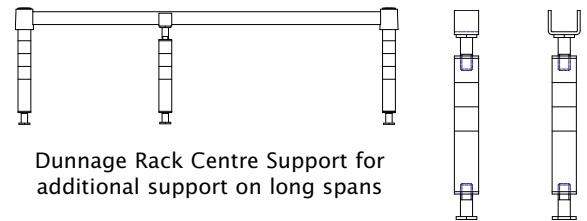
Channel Dunnage Rack

- Strong adaptable low-profile Polyseal rack has a load capacity of 1,500 lbs. and includes:
- Four Posts
- One heavy-duty Channel Dunnage Shelf
- 3-sided frame for added stability

Size D" x L" x H"	Rack without Mat	Rack with Mat	Weight lbs.
18 x 24 x 14	DR1824Z	DRM1824Z	14/26
18 x 30 x 14	DR1830Z	DRM1830Z	18/28
18 x 36 x 14	DR1836Z	DRM1836Z	22/32
18 x 48 x 14	DR1848Z	DRM1848Z	26/40
18 x 60 x 14	DR1860Z	DRM1860Z	33/47
24 x 24 x 14	DR2424Z	DRM2424Z	16/27
24 x 30 x 14	DR2430Z	DRM2430Z	20/29
24 x 36 x 14	DR2436Z	DRM2436Z	24/34
24 x 48 x 14	DR2448Z	DRM2448Z	28/41
24 x 60 x 14	DR2460Z	DRM2460Z	36/49
DUNNAGE RACK CENTRE SUPPORT			
14" PolySeal Centre Support P14ZSTS			2
Available with or without shelf mat. Additional sizes available.			



DRM2448Z
Available with or without shelf mat



Dunnage Rack Centre Support for
additional support on long spans

Mobile Channel Dunnage Rack

- Mobile Load Rating of 1,200 lbs., this rack includes:
- Four Polyseal Posts
- One heavy-duty Polyseal Channel Dunnage Shelf
- 3-sided Polyseal frame for added stability
- Four 5" polyurethane swivel casters, two with brakes

Size D" x L" x H"	Rack without Mat	Rack with Mat	Weight lbs.
18 x 24 x 12	DM1824Z	DMM1824Z	24/36
18 x 30 x 12	DM1830Z	DMM1830Z	28/38
18 x 36 x 12	DM1836Z	DMM1836Z	32/42
18 x 48 x 12	DM1848Z	DMM1848Z	36/50
18 x 60 x 12	DM1860Z	DMM1860Z	43/57
24 x 24 x 12	DM2424Z	DMM2424Z	26/37
24 x 30 x 12	DM2430Z	DMM2430Z	30/39
24 x 36 x 12	DM2436Z	DMM2436Z	34/44
24 x 48 x 12	DM2448Z	DMM2448Z	38/51
24 x 60 x 12	DM2460Z	DMM2460Z	46/59
Available with or without shelf mat. Additional sizes available.			

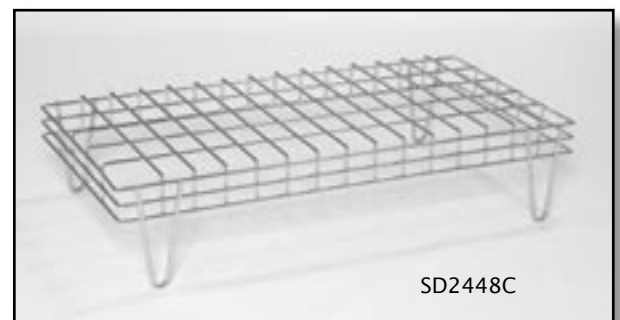


DMM2448Z
Available with or without shelf mat

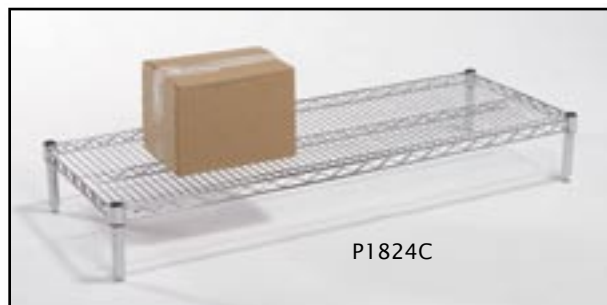
Stacking Dunnage Rack

- 1500 lbs. load capacity at an economical price
- No assembly required

Size D" x L" x H"	PolySeal Model No.	Chrome Model No.	Weight lbs.
18 x 36 x 10	SD1836Z	SD1836C	19
18 x 48 x 10	SD1848Z	SD1848C	25
18 x 60 x 10	SD1860Z	SD1860C	30
24 x 36 x 10	SD2436Z	SD2436C	21
24 x 48 x 10	SD2448Z	SD2448C	28
24 x 60 x 10	SD2460Z	SD2460C	34
60" units have 6 legs			



SD2448C



P1824C

Wire Platform

- Wire Platform includes:
- Four Posts, One Shelf
- Ideal for getting product off the floor
- Plastic clips and adjustable levelers

Size D" x L" x H"	PolySeal Model No.	Chrome Model No.	Weight lbs.
18 x 24 x 6	P1824Z	P1824C	9
18 x 30 x 6	P1830Z	P1830C	10
18 x 36 x 6	P1836Z	P1836C	12
21 x 24 x 6	P2124Z	P2124C	10
21 x 30 x 6	P2130Z	P2130C	11
21 x 36 x 6	P2136Z	P2136C	13
24 x 24 x 6	P2424Z	P2424C	11
24 x 30 x 6	P2430Z	P2430C	13
24 x 36 x 6	P2436Z	P2436C	15



UPR242480Z

Universal Pan & Insert Rack

- Mobile shelving unit has a 36-pan capacity and features:
- Independently adjustable sections for 12" x 20" pans and all sizes of pizza and bun pans and comes complete with:
- Four posts, numbered for quick set-up
- Four 5" swivel casters, 2 with brakes
- Four shelves complete with plastic clips
- Tray slides with 1½" spacing

Size D" x L" x H"	PolySeal Model No.	Sets of Tray Slides
24 x 24 x 60	UPR242460Z	2
24 x 24 x 80	UPR242480Z	3



Use Tarrison Rods & Clips to prevent pans from sliding off the back. See page 69.



Tray Slide Inserts

- Flexible design accommodates any size pan or tray

Size D" x H"	Description	PolySeal Model No.	Weight lbs.
18 x 22	18" Deep Tray Slide	TS18Z	10
24 x 22	24" Deep Tray Slide	TS24Z	12
24 x 4	24" Deep SINGLE Tray Slide	STS24Z	2

Beverage Rack

- Beverage rack dividers simply clip onto Tarrison shelving making bottle and can storage easy, complete with:
- Four Posts with levelers, numbered for quick set-up
- Two standard Tarrison shelves
- Two Flex Mount Shelves (shown as a slanted installation)
- Two bottle/can dividers, Polyseal finish
- One 3-sided frame for added stability
- Additional dividers may be ordered separately

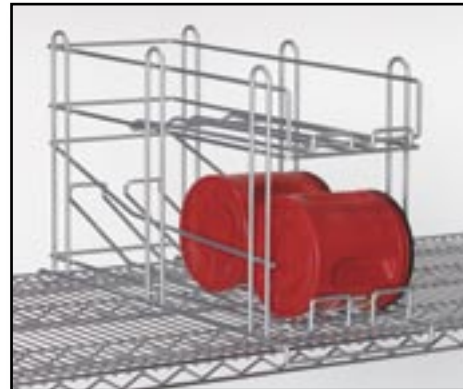
Size D" x L" x H"	PolySeal Model No.	Chrome Model No.	Weight lbs.
24 x 48 x 63	BCRU2448Z	BCRU2448C	84
24 x 60 x 63	BCRU2460Z	BCRU2460C	106
Additional Bottle/Can Rack Dividers			
24 x 48	BCR2448Z	n/a	2
24 x 60	BCR2460Z	n/a	3



Can Racks

- Provides easy access and storage
- 24" rack holds eight #10 cans; 18" rack holds six
- Gravity fed, front dispensing and loading - FIFO
- Complete Can Rack Unit (not shown) includes:
- Four posts with levelers, four Tarrison shelves and twelve can racks
- Build your own Can Rack System

Size D" x L" x H"	PolySeal Model No.	Weight lbs.
18 x 36 x 63	CRU1836Z	86
24 x 36 x 63	CRU2436Z	111
Additional Can Racks		
18.5 x 10 x 15	CR18Z	3
24.5 x 10 x 15	CR24Z	4



Bottle Grids

- Designed for mobility
- 4" x 4" inch grid
- Comes standard with two open frames, one grid shelf, one standard shelf, two swivel & two brake casters

Size D" x L" x H"	PolySeal Model No.	Weight lbs.
18 x 30 x 38	BG1830Z	47
18 x 36 x 38	BG1836Z	52
18 x 48 x 38	BG1848Z	61
24 x 30 x 38	BG2430Z	57
24 x 36 x 38	BG2436Z	63
24 x 48 x 38	BG2448Z	72



Racks & Carts



File Folder Dividers for Cart

Mail Room Delivery Cart

- For transport of office documents
- Standard with one basket shelf, one traditional shelf, two utility cart handles, two swivel and two brake casters, one pair of file folder dividers
- Max. Load capacity 100 pounds in the Basket Shelf

Size D" x L" x H"	Chrome Model No.	Weight lbs.
18 x 36 x 38	MDC1836C	29
ADDITIONAL SHELVES		
18 x 36	BS1836C	8
FILE FOLDER DIVIDERS		
18	FFD18C	1

Utility Cart Handle

- Designed for the utility cart, the 33" high handle available in chrome only is constructed of 1" tubing grooved at 1" increments.

Size D"	Chrome Model No.	Weight lbs.
18	UCH18C	2
21	UCH21C	3
24	UCH24C	4

Utility Cart

- For convenient transport of small packages
- Complete with choice of 2 or 3 shelves in PolySeal or Chrome and four 5" heavy duty swivel casters and two "U" shaped handles
- Mobile load capacity: 1200 lbs.
- Overall height is 38"
- Solid Stainless Steel Shelves available as an option



UC18362C
Shown with optional brake casters



UC18363C

Size D" x L"	2 Shelf Unit			3 Shelf Unit		
	PolySeal Model No.	Chrome Model No.	Weight lbs.	PolySeal Model No.	Chrome Model No.	Weight lbs.
18 x 30	UC18302Z	UC18302C	39	UC18303Z	UC18303C	47
18 x 36	UC18362Z	UC18362C	42	UC18363Z	UC18363C	52
18 x 42	UC18422Z	UC18422C	45	UC18423Z	UC18423C	56
18 x 48	UC18482Z	UC18482C	49	UC18483Z	UC18483C	61
21 x 30	UC21302Z	UC21302C	41	UC21303Z	UC21303C	50
21 x 36	UC21362Z	UC21362C	45	UC21363Z	UC21363C	56
21 x 42	UC21422Z	UC21422C	47	UC21423Z	UC21423C	59
21 x 48	UC21482Z	UC21482C	51	UC21483Z	UC21483C	65
24 x 30	UC24302Z	UC24302C	46	UC24303Z	UC24303C	57
24 x 36	UC24362Z	UC24362C	50	UC24363Z	UC24363C	63
24 x 42	UC24422Z	UC24422C	54	UC24423Z	UC24423C	69
24 x 48	UC24482Z	UC24482C	56	UC24483Z	UC24483C	72
24 x 60	UC24602Z	UC24602C	66	UC24603Z	UC24603C	87

Order optional casters with brakes separately

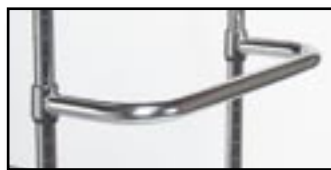


LC2436C

Linen Cart

- Built with functionality in mind, the Linen Cart features:
- Three shelves, side and back enclosures and four 5" heavy-duty polyurethane swivel casters, two with brakes
- Open wire shelves allow free air circulation and greater visibility of merchandise while moisture and dust accumulation is greatly reduced
- Mobile load capacity 1200 lbs.
- Additional shelves available

Size D" x L" x H"	Chrome Model No.	Weight lbs.
24 x 36 x 69	LC2436C	81
24 x 48 x 69	LC2448C	90
24 x 60 x 69	LC2460C	105
ADDITIONAL SHELVES		
24 x 36	S2436C	13
24 x 48	S2448C	16
24 x 60	S2460C	21



Safety Push Handle

- Designed for added ease of use and hand safety Safety Push Handle allows the hands to be kept within the cart width

Size D"	Chrome Model No.	Weight lbs.
18	SPH18C	2.0
21	SPH21C	2.5
24	SPH24C	3.0

Apparel Cart

- 12 individual Cubicles complete with label holders
- Multiple client laundry delivery
- Four 5" polyurethane non-marking casters, two with brakes
- Mobile load capacity 1200 lbs.
- Use optional Dolly Base for heavy duty use - see page 52

Size D" x L" x H"	Chrome Model No.	Weight lbs.
24 x 60 x 69	AC2460C	120



Bus Cart

- 3 plastic tiers complete with 2 handles
- Anodized aluminum legs, four 5" casters
- Maximum Load Capacity 330 lbs.

Size D" x L" x H"	Model No.	Weight lbs.
16 x 32 x 36	BC1632	40



Security Unit - Stationary & Mobile

- Provides a more safe and secure method of storing valuable equipment and inventory
- Two inch square open mesh grid ensures high visibility
- Lockable double door opens a full 270° and keeps contents protected
- Easily assembled the unit and comes complete with:
- Two shelves complete with plastic clips
- Four posts, numbered for quick set-up
- Side enclosure panels included
- Back enclosure panels included
- Two front door panels included
- Stationary units are 63" high; Mobile 69" high

Size W" x L"	Stationary PolySeal Model No.	Mobile PolySeal Model No.	Weight lbs.
24 x 36	SU2436Z	MSU2436Z	132/142
24 x 48	SU2448Z	MSU2448Z	155/165
24 x 60	SU2460Z	MSU2460Z	175/185
ADDITIONAL SHELVES			
Size W" x L"	PolySeal Model No.		Weight lbs.
24 x 36	S2436Z		13
24 x 48	S2448Z		16
24 x 60	S2460Z		21
Dolly base sold separately, is recommended for high volume transport of mobile units			

Dolly Base

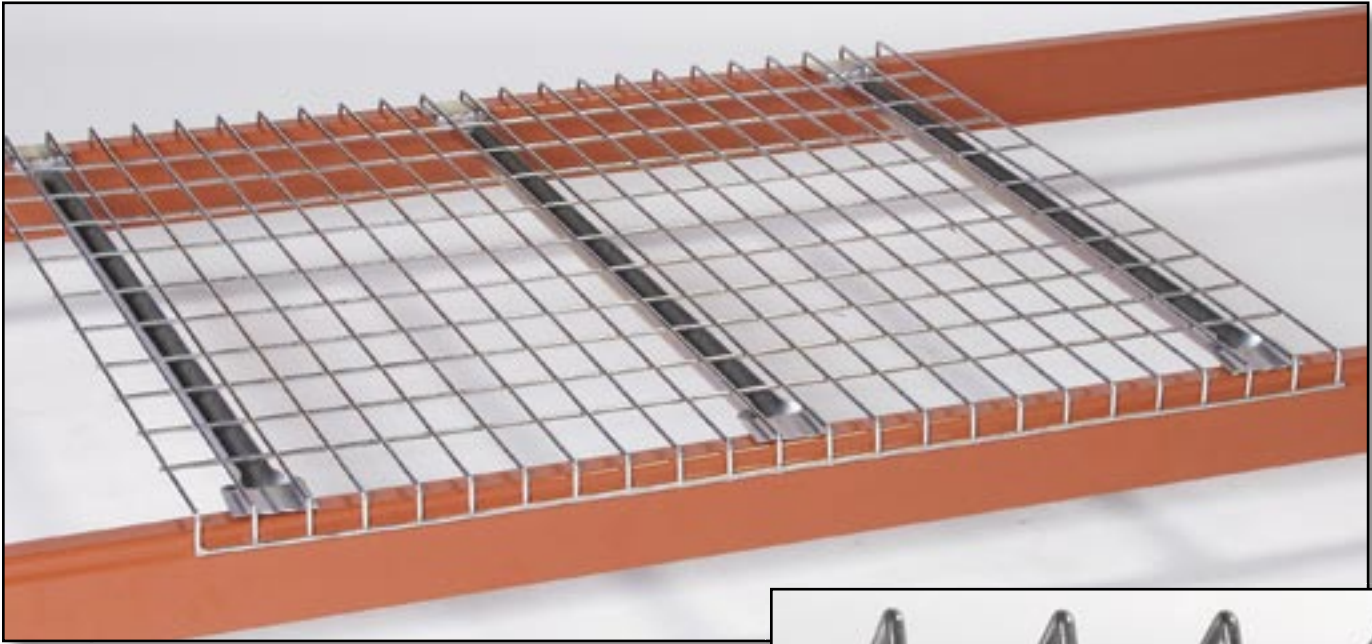
- Heavy-Duty metal Dolly Base is recommended for use on high volume transport of mobile units

Size W" x L"	Model No.	Weight lbs.
18 x 36	DBC1836	10
18 x 48	DBC1848	12
18 x 60	DBC1860	14
24 x 36	DBC2436	13
24 x 48	DBC2448	15
24 x 60	DBC2460	18
30 x 36	DBC3036	15
30 x 48	DBC3048	17

Plate Casters

- Non-marking Polyurethane
- Plate casters for use with dolly bases

Size inches	Swivel Model No.	Swivel w/Brake Model No.
5	C5PPS	C5PPSB



Wire Mesh Decking

Ease of Installation

- Installation is quick and easy and requires no tools or fastening

Safety

- Wire deck fits safely and securely over rack beams reducing the risk of accident and injury

Maintenance

- Grid pattern reduces dust accumulation for cleaner inventory

Efficiency

- Wire mesh grid pattern allows overhead lighting to reach unoccupied shelving, increasing visibility

Cost Containment

- Wire decking vs Wood Decking may potentially reduce insurance rates



Galvanized Wire Decking

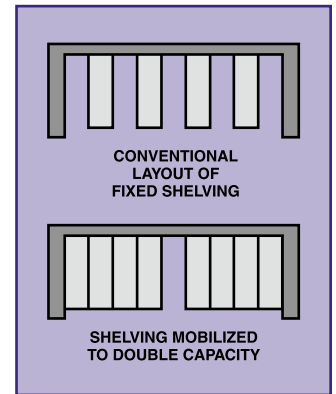
- Tarrison's galvanized wire decking is designed for bulk storage and has inverted channels on the underside, running front to back for increased support
- Designed to fit Box Beam
- Wire mesh pattern 2.5" x 4.5"
- Load capacity - Up to 5,500 lb, based on evenly distributed loads
- 1.5" waterfall front and back for safety
- Available in Step Beam design - call your Tarrison Representative

Size W" x L"	Model No.	Weight lbs.
36 x 46	WD-3646	8
36 x 52	WD-3652	10
42 x 46	WD-4246	12
42 x 52	WD-4252	12
48 x 52	WD-4852	14

Also available in powder coated finish.
May require a minimum quantity ordered.

High Density Storage

Overhead Compacting System

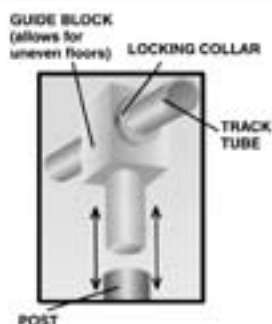


Space Tite Overhead Compacting Storage System

- Maximize limited floor space and double storage capacity instantly with this economical mobile shelving system
- Space-Tite is designed to provide instant access to inventory and allows maximum air and light circulation
- By combining stationary and mobile units, unnecessary aisles are eliminated to free up floor space thus increasing the number of shelving units in a designated area
- Stainless steel overhead track assures smooth shifting of units, and the system compensates for uneven floors
- Both stationary and mobile units are available with a variety of shelf sizes and finishes
- Mobile units have 5" polyurethane rigid casters installed on tie bars which must be used to assure caster alignment
- Simple installation makes this system practical and easy to use

Description	Model No.	Price
Overhead Guide Bar	SGB	\$40/ft
Joining Insert for Overhead Guide Bar	Jl	\$110
Locking Collar	LC	\$30
Neoprene Guide Block	GB	\$58
Foot Plate	FPFT	\$8
5" Non-Marking Polyurethane Rigid Caster	C5SPR	\$41
18" Long Tie Bar	TB18	\$20
21" Long Tie Bar	TB21	\$22
24" Long Tie Bar	TB24	\$24

Order posts and shelves separately. One Tie Bar must be used for each two casters ordered.

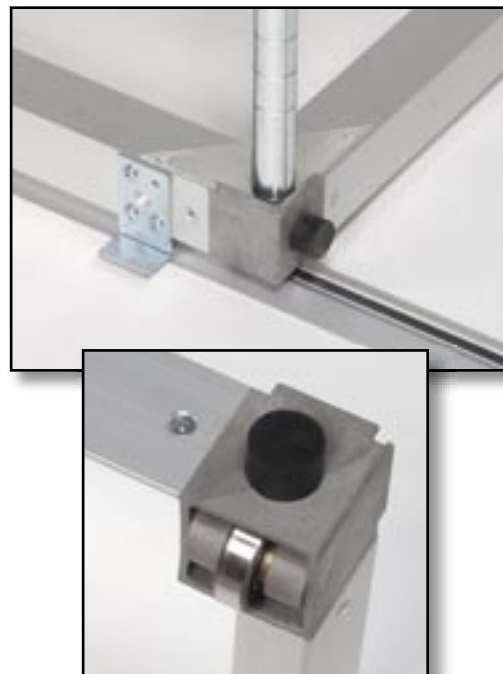


Shown with 5" Polyurethane Rigid Casters
Model No.C5SPR

Floor Track Compact System

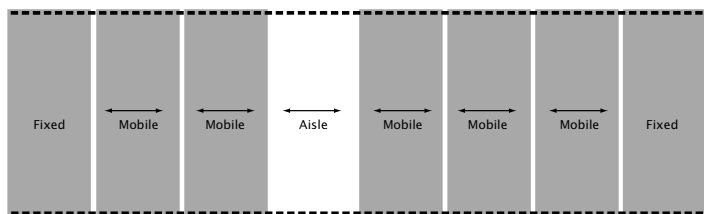


By squeezing out excess aisles, **Compacting Systems** offer maximum space utilization, storage density and space savings



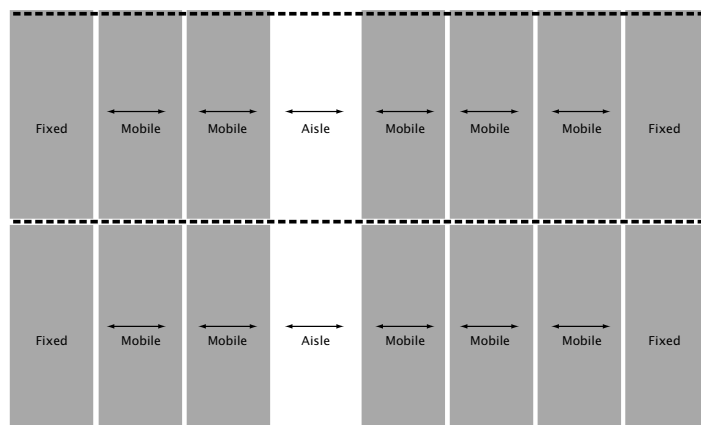
Floor Track High Density Mobile Storage System

- Like the Space-Tite Overhead Track System and components, the Compact System is built to your unique and custom specifications and can accommodate either new or existing shelving
- The Compacting System is the most cost-effective of all the Tarrison High Density Storage Systems
- Low-profile tracks help maintain easy foot and cart accessibility and require no decking or false floor
- Retrieval times increased by placing more material along main aisles
- System access through just one moveable aisle
- Simple installation makes this system easy to relocate or expand to accommodate system growth
- Contact your Tarrison Representative for a detailed quotation



2 Track Compact Installation

- 2 Track for use with Single "S" and Back to Back "BB"
- 3 Track for use with Double Deep "DD" and Quad "Q"
- Reference page 57 for detailed size listing



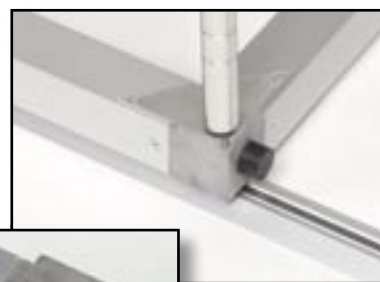
3 Track Compact Installation

High Density Storage

Floor Track Lateral System

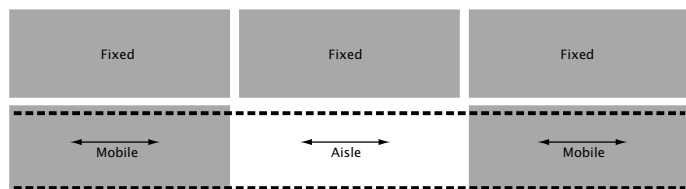


With over 50% of materials accessible, **Lateral Systems** improve productivity by reducing retrieval time and saving precious space

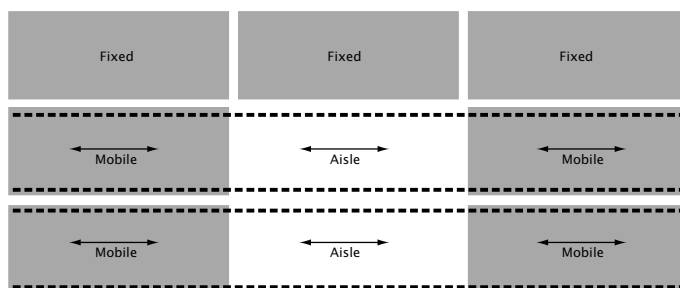


Floor Track High Density Mobile Storage System

- Like the Space-Tite overhead track system and components, the Lateral System is built to your unique and custom specifications and can accommodate either new or existing shelving
- Ideal for maximizing storage space for frequently accessed materials
- More than one half of stored materials are exposed and visible at all times
- Retrieval times increased by placing more material along main aisles
- Optional foot stops secure shelving units to prevent unintentional closing
- Simple installation makes this system easy to relocate or expand to accommodate growth

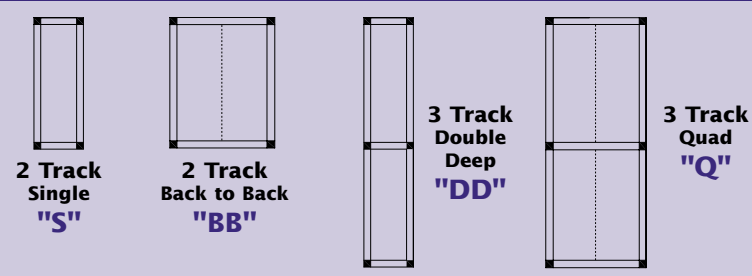


Bi-Stor Lateral Installation



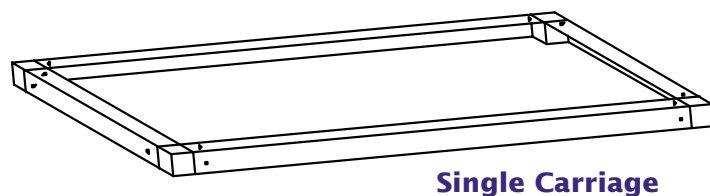
Tri-Stor Lateral Installation

Floor Track High Density Mobile Storage System

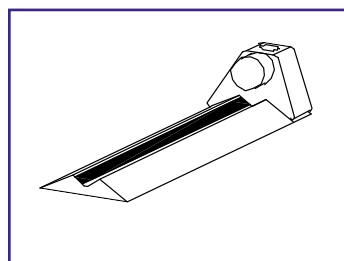
Two Track Single Carriage System				Three Track Single Carriage System			
Size D x L	Compact Model No.	Size D x L	Back to Back Model No.	Size D x L	Double Deep Model No.	Size D x L	Quad Model No.
14x36	CC1436S*	28x36	CC2836BB	14x72	CC1472DD	28x72	CC2872Q
14x42	CC1442S*	28x42	CC2842BB	14x84	CC1484DD	28x84	CC2884Q
14x48	CC1448S*	28x48	CC2848BB	14x96	CC1496DD	28x96	CC2896Q
14x54	CC1454S*	28x54	CC2854BB	14x108	CC14108DD	28x108	CC28108Q
14x60	CC1460S*	28x60	CC2860BB	14x120	CC14120DD	28x120	CC28120Q
14x66	CC1466S*	28x66	CC2866BB	18x72	CC1872DD	36x72	CC3672Q
14x72	CC1472S*	28x72	CC2872BB	18x84	CC1884DD	36x84	CC3684Q
18x36	CC1836S*	36x36	CC3636BB	18x96	CC1896DD	36x96	CC3696Q
18x42	CC1842S*	36x42	CC3642BB	18x108	CC18108DD	36x108	CC36108Q
18x48	CC1848S*	36x48	CC3648BB	18x120	CC18120DD	36x120	CC36120Q
18x54	CC1854S*	36x54	CC3654BB	21x72	CC2172DD	42x72	CC4272Q
18x60	CC1860S*	36x60	CC3660BB	21x84	CC2184DD	42x84	CC4284Q
18x66	CC1866S*	36x66	CC3666BB	21x96	CC2196DD	42x96	CC4296Q
18x72	CC1872S*	36x72	CC3672BB	21x108	CC21108DD	42x108	CC42108Q
21x36	CC2136S*	42x36	CC4236BB	21x120	CC21120DD	42x120	CC42120Q
21x42	CC2142S*	42x42	CC4242BB	24x72	CC2472DD	48x72	CC4872Q
21x48	CC2148S*	42x48	CC4248BB	24x84	CC2484DD	48x84	CC4884Q
21x54	CC2154S*	42x54	CC4254BB	24x96	CC2496DD	48x96	CC4896Q
21x60	CC2160S*	42x60	CC4260BB	24x108	CC24108DD	48x108	CC48108Q
21x66	CC2166S*	42x66	CC4266BB	24x120	CC24120DD	48x120	CC48120Q
21x72	CC2172S*	42x72	CC4272BB				
24x36	CC2436S*	48x36	CC4836BB				
24x42	CC2442S*	48x42	CC4842BB				
24x48	CC2448S*	48x48	CC4848BB				
24x54	CC2454S*	48x54	CC4854BB				
24x60	CC2460S*	48x60	CC4860BB				
24x66	CC2466S*	48x66	CC4866BB				
24x72	CC2472S*	48x72	CC4872BB				

* Available for Lateral System. Please add Prefix L before model number. Order Posts and Shelves separately.

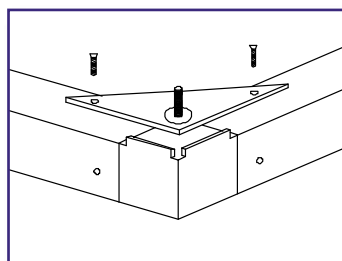
Description	Model No.
Floor Track, V Groove	FTVG
Floor Track, Anti-Tip	FTAT
Anti-Tip Carriage Bracket	ATCB
HD End Stops 2 track req. 4, 3 track req. 6	ES
Shim Kit, 1 Kit/25ft	SK
Triangle Foot Plate, 1 req./post	FTAP



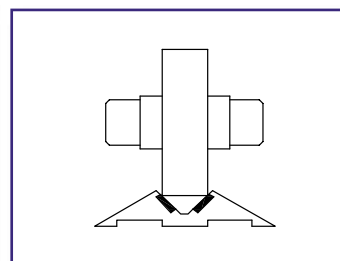
All Floor Track pre-drilled for easy installation



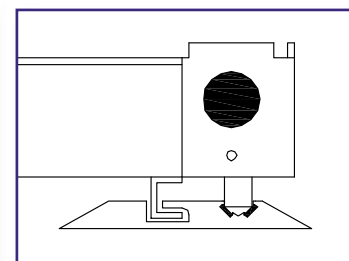
End Stop



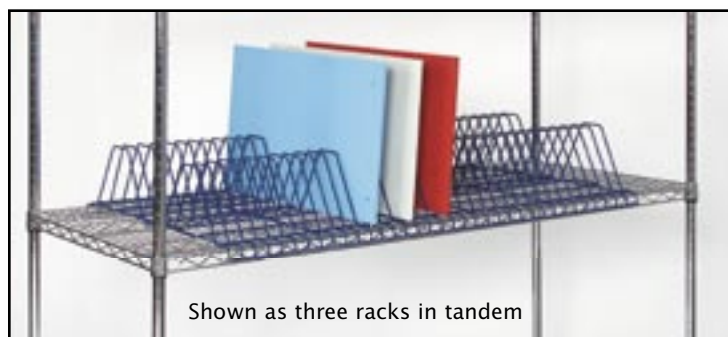
Triangle Foot Plate



"V" Groove Track



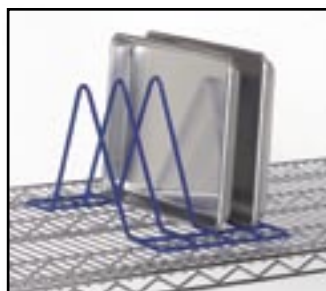
Anti-Tip Track



Storage/Drying Rack for Trays and Boards

- Designed to provide optimum air circulation for cutting board, pan and tray drying
- Channels allow drainage and securely hold in trays
- 3/4" spacing stores 12 pieces

Size D" x L" x H"	PolySeal Model No.	Weight lbs.
24.5 x 12 x 8	DR24128Z	7



Storage/Drying Rack for Insert Pans

- Designed to provide optimum air circulation for insert pans
- Channels allow drainage and securely hold in trays
- 2.75" spacing stores 4 pieces

Size D" x L" x H"	PolySeal Model No.	Weight lbs.
24.5 x 12 x 8	DR24128Z	5



Garment Rack

- Efficient solution to garment storage
- Open wire design promotes air flow. Each unit comes complete with:
- Four posts with levelers for uneven floor surfaces
- Three shelves adjustable at 1" inch increments
- Hanger rod and two rod hooks

Size D" x L" x H"	Chrome Model No.	Weight lbs.
18 x 36 x 74	GS1836C	48
18 x 48 x 74	GS1848C	55
18 x 60 x 74	GS1860C	70

Optional 5" swivel casters (see page 72) add 6" to height.
Additional sizes available.



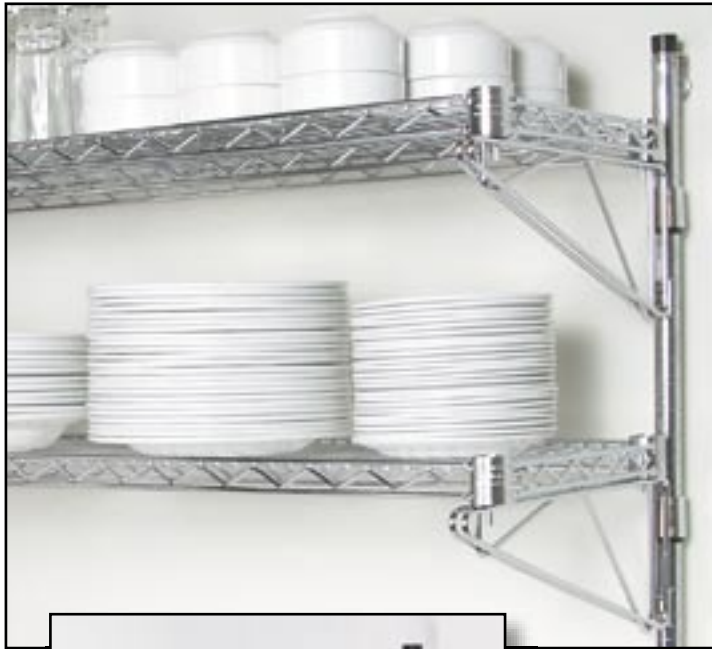
Wall Garment Storage

- Single shelf unit easily attaches to wall and includes:
- One shelf
- Two Single Wall Mount Brackets
- Hanger rod and two rod hooks

Size D" x L"	Chrome Model No.	Weight lbs.
24 x 36	GWS2436C	18
24 x 48	GWS2448C	21
24 x 60	GSW2460C	26

Shown with optional clothes hangers (see page 73)

Adjustable Post Bracket System



PK14 and APB14CS

Post Kit

- Post wall mount brackets and shelves adjust at 1" increments to provide the most versatile way of utilizing wall space
- Multiple sections can be installed by using three or more Post Kits with single shelf brackets at the ends and double shelf brackets on the centre post kit
- Easy to install each Post Kit consists of the following:
- One post plus parts kit for wall mounting

Size H"	Chrome Model No.	Weight lbs.
14	PK14	2
34	PK34	4
54	PK54	6
63	PK63	6

ADJUSTABLE POST SHELF BRACKETS

Size D"	Single Chrome Model No.	Double Chrome Model No.	Weight lbs.
14	APB14CS	APB14CD	2
18	APB18CS	APB18CD	2
21	APB21CS	APB21CD	2
24	APB24CS	APB24CD	2

Order two Post Kits per unit and two Post Shelf Brackets per shelf.
Shelves sold separately.



Shelf not included.



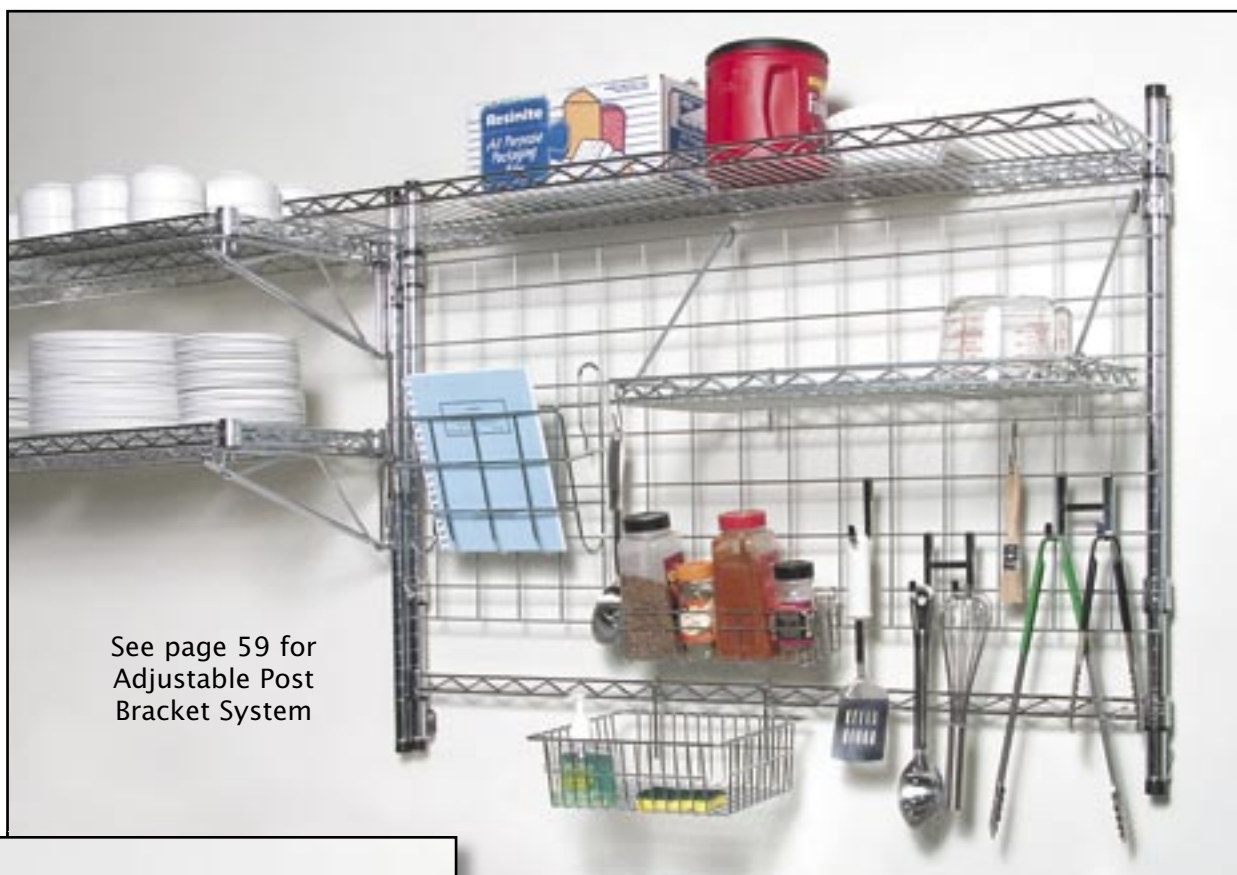
Use two single shelf brackets overlapped to bank two shelves together, side-by-side

Wall Mount Bracket

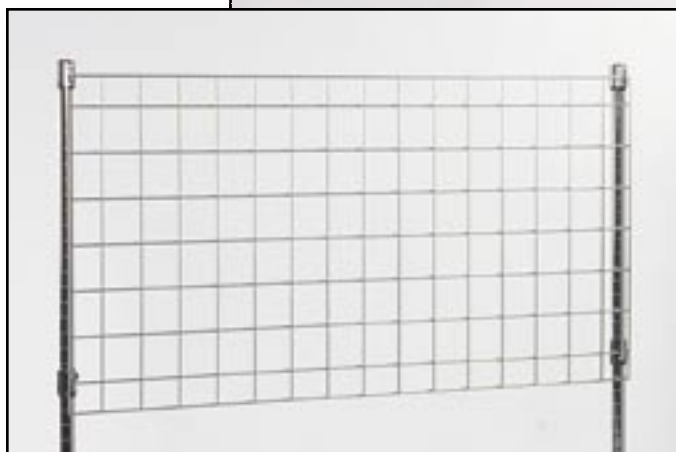
- Ideal for creating wall storage space where floor space is limited
- Two wall brackets required per shelf
- Use two single shelf brackets overlapped to bank two shelves together, side by side

Size D"	Chrome Model No.	Weight lbs.
14	SWB14C	2
18	SWB18C	2
21	SWB21C	2
24	SWB24C	2

Order two Wall Mount Brackets per shelf.
Shelves sold separately.



See page 59 for
Adjustable Post
Bracket System



Wall Grid Planner

- Maximize your wall storage space with the versatile Wall Grid Planner
- Perfect for hanging utensils, and other items (unit not exactly as shown)

Size W" x H"	PolySeal Model No.	Weight lbs.
WALL GRID		
22 x 36	WG2236Z	4
22 x 42	WG2242Z	5
22 x 48	WG2248Z	6
22 x 54	WG2254Z	7
22 x 60	WG2260Z	8
22 x 66	WG2266Z	9
22 x 72	WG2272Z	10
MOUNTING BRACKETS		
Wall Mount	WGBZ	1
Post Mount	SCH1	1
Mounting Brackets sold individually, 4 recommended per Wall Grid		



See page 9 for
Solid Stainless Steel Wall Shelves

Wall Grid Planner Accessories

- Wall Grid Planner stays organized with a selection of Tarrison Wall Grid Planner Accessories

Model No.	Description	Size W" x D" x H"
WGBZ	Wall Grid Bracket	n/a
WGCZ	Wall Grid Clip	n/a
SGS1212Z	Small PolySeal Grid Shelf	12 x 12
SGS1224Z	Small PolySeal Grid Shelf	12 x 24
DH	Chrome Document Holder	12.375 x 2 x 8.63
SR	Chrome Spice Rack	3 x 4 x 12
UB	Utility Basket	12 x 10 x 4



Wall Grid Bracket
Model No. WGBZ



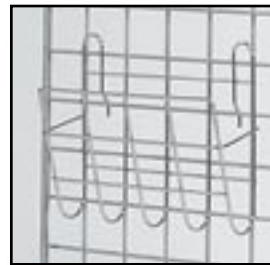
Wall Grid Clip
Clips Wall Grids together for continuous runs.
Model No. WGCZ



Small Grid Shelf

Use Tarrison's Small Grid Shelf to hold gadgets. This shelf can be easily moved along the grid and positioned perfectly for the task at hand.

12"x12" Model No. SGS1212Z
12"x24" Model No. SGS1224Z



Document Holder
Model No. DH



Spice Rack

Keep spices and other small items organized in Tarrison's Spice Rack. Attach the rack to any shelf, hanger rail or grid for easy accessibility.

Interior dimensions are
3" H x 4" D x 12" L.
Model No. SR



Utility Basket
Model No. UB



**Small
"J" Hook**
Model No. SJH



**Large
"J" Hook**
Model No. LJH



**Double
"J" Hook**
Model No. DJH



Wire "S" Hook
Model No. WSH

Hooks

- Variety of multi-purpose snap-on "J" and "S" hooks hang easily on shelves, grid panels or hanger rails for fingertip access to items

Size H"	Model No.
3½" Small "J" Hook	SJH
3½" Large "J" Hook	LJH
3½" Double "J" Hook	DJH
3" Wire "S" Hook	WSH
Hooks sold individually	

Wine Bottle Display Rack

- Attractive, effective wine bottle storage for restaurant or retail application
- Shelves should be spaced as recommended to allow easy access and product identification
- Each rack comes complete with four posts with foot plates
- Wire cradle shelves with clips

Size D" x L" x H"	Cradle Shelves	Capacity 750 ml. Bottles	Chrome Model No.	Weight lbs.
14 x 24 x 34	5	30	WR1424C3	38
14 x 30 x 34	5	40	WR1430C3	43
14 x 36 x 34	5	45	WR1436C3	48
14 x 48 x 34	5	60	WR1448C3	58
14 x 24 x 54	9	54	WR1424C5	60
14 x 30 x 54	9	72	WR1430C5	69
14 x 36 x 54	9	81	WR1436C5	78
14 x 48 x 54	9	108	WR1448C5	96
14 x 24 x 74	14	84	WR1424C7	89
14 x 30 x 74	14	112	WR1430C7	103
14 x 36 x 74	14	126	WR1436C7	133
14 x 48 x 74	14	168	WR1448C7	145
Additional Shelves				
14 x 24		6	WCS1424	5
14 x 30		8	WCS1430	6
14 x 36		9	WCS1436	7
14 x 48		12	WCS1448	9

Shelves and posts can be ordered separately for any configuration, including floor and tabletop units.

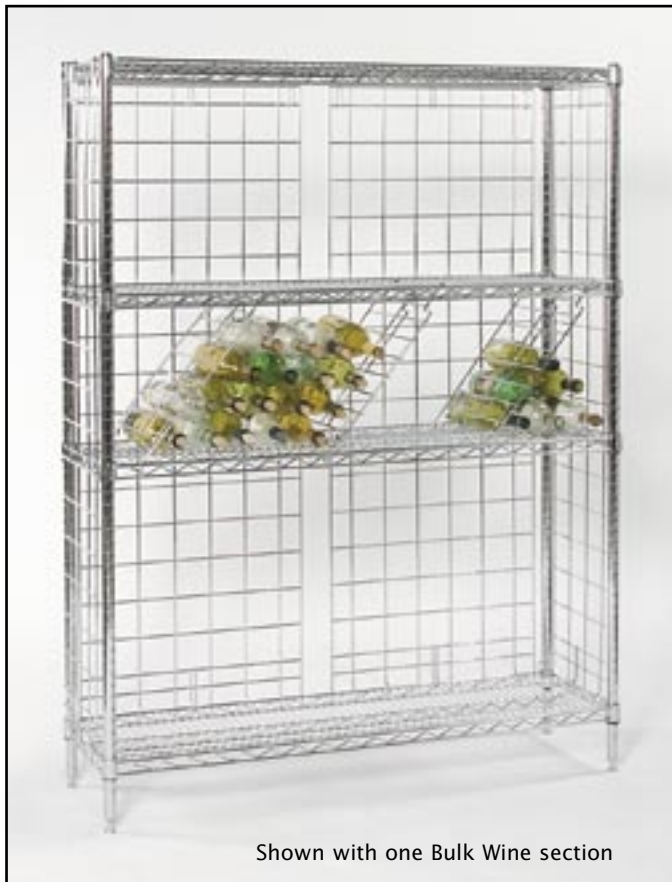


Diamond Wine Display Rack

- Conveniently mounts to Tarrison shelving for effective wine bottle display



Size D" x L" x H"	Capacity 750 ml. Bottles	PolySeal Model No.	Weight lbs.
8 x 24 x 23.75	41	DWR24Z	4



Bulk Wine Bottle Storage

- The most cost effective method of storing large quantities of wine bottles
- Open wire design allows efficient temperature control
- Three sides enclosed to reduce breakage
- 63" high unit includes 5 shelves and 12 or 16 dividers (3 per 36" wide section, 4 per 48")
- 74" high unit includes 6 shelves and 15 or 20 dividers (3 per 36" wide section, 4 per 48")

Size D" x L" x H"	Capacity 750 ml. Bottles	Chrome Model No.	Weight lbs.
14 x 36 x 63	144	BW1436C6	104
14 x 48 x 63	192	BW1448C6	122
14 x 36 x 74	180	BW1436C7	121
14 x 48 x 74	240	BW1448C7	141
Additional Shelves			
14 x 36		S1436C	8
14 x 48		S1448C	10.5
Additional Accessories			
14 x 63	Enclosure Panel - EP1463C		3
14 x 74	Enclosure Panel - EP1474C		3
	Bulk Dividers - BWD		2
	Foot Plate (each) - FPFT		1
	Post Wall Bracket - PWB		1



Medium Duty Storage/Display Shelving

- Develop a storage or display system with Tarrison medium duty shelving
- Low cost solution for light to medium duty needs
- See page 72 for casters

Posts			
Size in.	Value Epoxy Model No.	Chrome Model No.	Weight lbs.
28	P28EB	P28C	2.0
34	P34EB	P34C	2.0
54	P54EB	P54C	3.0
63	P63EB	P63C	3.5
74	P74EB	P74C	4.0
Shelves			
14 x 24	LDS1424EB	LDS1424C	5
14 x 36	LDS1436EB	LDS1436C	6
14 x 48	LDS1448EB	LDS1448C	7
18 x 18	LDS1818EB	LDS1818C	5
18 x 24	LDS1824EB	LDS1824C	5
18 x 36	LDS1836EB	LDS1836C	7
18 x 48	LDS1848EB	LDS1848C	9
NOT RECOMMENDED FOR HEAVY-DUTY COMMERCIAL DRY OR WET STORAGE			
Order casters separately.			

Solid Surface Baker's Rack



Shown with Work Centre accessories see page 37

- Solid surface tops include:
- Micro Bevel on front edge
- Optional 4" backsplash
- Choice of colours
- Matching Undershelf with square edge or micro bevel available



4" Backsplash with micro bevel on front edge



Flat surface with square edge (shown) or micro bevel edge

Flat Solid Surface or Wood Inlay Undershelf

Size D" x L"	Model No.	Model No. (not shown)	Weight lbs.
14 x 36	FS1436	WI1436	12
14 x 48	FS1448	WI1448	16
18 x 36	FS1836	WI1836	14
18 x 48	FS1848	WI1848	18
24 x 36	FS2436	WI2436	16
24 x 48	FS2448	WI2448	20
24 x 60	FS2460	WI2460	24

Specify square or micro bevel front edge



Matching Undershelf with square edge or micro bevel edge

Solid Surface Colour Choices

(call your Tarrison representative for current colour selection)



Solid Surface Baker's Rack

- **Option 1** - Flat surface, one undershelf
- **Option 2** - 4" Back Splash surface, one undershelf
- **Option 3** - Flat surface, one undershelf, one overshelf
- **Option 4** - 4" Back Splash surface, one undershelf, one overshelf



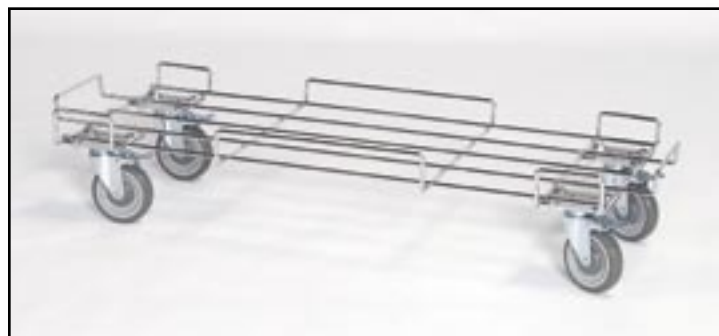
Size	36" High Unit		63" High Unit with Overshelf		Weight
D" x L"	Option 1 Model No.	Option 2 Model No.	Option 3 Model No.	Option 4 Model No.	lbs.
14 x 36	BR1436UC	BR41436UC	BR1436UOC	BR41436UOC	30
14 x 48	BR1448UC	BR41448UC	BR1448UOC	BR41448UOC	35
18 x 36	BR1836UC	BR41836UC	BR1836UOC	BR41836UOC	30
18 x 48	BR1848UC	BR41848UC	BR1848UOC	BR41848UOC	35
24 x 36	BR2436UC	BR42436UC	BR2436UOC	BR42436UOC	40
24 x 48	BR2448UC	BR42448UC	BR2448UOC	BR42448UOC	45
24 x 60	BR2460UC	BR42460UC	BR2460UOC	BR42460UOC	60



Mobile Dump Bin Merchandiser



Stationary Dump Bin Merchandiser



Dump Bin Merchandiser

- Full view open design modular system provides easy access for inventory control at a glance
- Position merchandiser side by side or back to back
- Dump Bin Merchandiser is free standing and comes complete with:
 - One 20" Bin, two 18" Bins and two 16" Bins
 - Individual bin weight capacity 100 lbs
 - Mobile Unit includes Dolly Base and Casters, two with brakes

Size D" x L" x H"	Chrome Model No.	Weight lbs.
STATIONARY UNIT		
18 x 36 x 45	DBMU36C	56.0
18 x 48 x 45	DBMU48C	71.0
MOBILE UNIT		
18 x 36 x 52	MDBMU36C	80.0
18 x 48 x 52	MDBMU48C	98.0
ADDITIONAL BIN SHELVES		
16 x 36 x 9	DBM1636C	10.0
16 x 48 x 9	DBM1648C	13.0
18 x 36 x 9	DBM1836C	11.0
18 x 48 x 9	DBM1848C	14.0
20 x 36 x 9	DBM2036C	14.0
20 x 48 x 9	DBM2048C	17.0

Dump Bin Dividers sold separately

**ALL PRODUCTS
AVAILABLE IN ANY
FINISH OR COLOUR**
May require a minimum quantity ordered

Dump Bin Dividers

- Three convenient sizes from which to choose
- Easy to install and keeps products organized

Size D" x H"	Chrome Model No.	Weight lbs.
16 x 8	DBD168C	2.0
18 x 8	DBD188C	2.0
20 x 8	DBD208C	2.0

Dump Bin Dolly Base

- Convert free standing Dump Bin Merchandiser to a mobile unit with the Dump Bin Dolly Base
- Requires one 20" deep bottom dump bin shelf
- Plate casters sold separately

Size D" x L" x H"	Chrome Model No.	Weight lbs.
20 x 36	DBDB2036C	18.0
20 x 48	DBDB2048C	21.0
Plate Casters		
5" Swivel Plate Caster	C5PPS	2.5
5" Swivel Plate Caster w/brake	C5PPSB	2.5

Casters are non-marking polyurethane

Slanted Shelf Merchandiser

- Unique end truss prevents products from falling off and provides increased stability
- Slanted shelves provide visibility and easy access and includes:
- Four shelves with plastic clips
- Four posts with numbers for easy set-up
- Mobile unit includes four 5" swivel casters, two with brakes

Size D" x L" x H"	Chrome Model No.	Weight lbs.
STATIONARY UNIT		
18 x 36 x 54	SSU18365C	54
18 x 48 x 54	SSU18485C	62
18 x 60 x 54	SSU18605C	82
18 x 36 x 63	SSU18366C	54
18 x 48 x 63	SSU18486C	62
18 x 60 x 63	SSU18606C	82
MOBILE UNIT		
18 x 36 x 60	MSSU18365C	64
18 x 48 x 60	MSSU18485C	72
18 x 60 x 60	MSSU18605C	92
18 x 36 x 69	MSSU18366C	64
18 x 48 x 69	MSSU18486C	72
18 x 60 x 69	MSSU18606C	92
ADDITIONAL SHELVES		
18 x 36	SS1836C	9.5
18 x 48	SS1848C	12
18 x 60	SS1860C	17



**ALL PRODUCTS
AVAILABLE IN ANY
FINISH OR COLOUR**
May require a minimum quantity ordered

Bread Rack

- Ideal for providing maximum product visibility and air circulation the Tarrison Bread Rack comes complete with:
- Four slanted shelves with plastic clips and front rail
- Four posts grooved at 1" increments for easy shelf adjustment
- Available in Chrome or Value Epoxy finishes

Size D" x L" x H"	Chrome Model No.	Value Epoxy Model No.	Weight lbs.
24 x 36 x 63	SSB2436C	SSB2436EBG	66
24 x 48 x 63	SSB2448C	SSB2448EBG	78

Accessories

Shelf Ledge

- Ledges protect valuable inventory from falling off the edge of the shelf
- Snaps onto perimeter of shelf creating a 1" or 4" high retaining edge

Size W"	1" High Model No.	4" High Model No.
14	SL114C	SL414C
18	SL118C	SL418C
21	SL121C	SL421C
24	SL124C	SL424C
30	SL130C	SL430C
36	SL136C	SL436C
42	SL142C	SL442C
48	SL148C	SL448C
54	SL154C	SL454C
60	SL160C	SL460C
66	SL166C	SL466C
72	SL172C	SL472C
Order shelves separately		



Shelf Divider

- Keeps shelves organized and snaps in easily without the use of tools
- Attaches at any point along shelf

Size W" x H"	Chrome Model No.
14 x 8	SD814C
18 x 8	SD818C
21 x 8	SD821C
24 x 8	SD824C
Order shelves separately	



Hanger Rail

- Convenient rail fits on posts along width or length of the unit
- Optional hooks and other accessories can hang from rail at any point for instant access
- Ideal for use with Tarrison's Work Centres

Size W"	Chrome Model No.
14	HR14C
18	HR18C
21	HR21C
24	HR24C
30	HR30C
36	HR36C
42	HR42C
48	HR48C
54	HR54C
60	HR60C
66	HR66C
72	HR72C



Enclosure Panel

- Panels enclose sides and backs to prevent product from falling off the shelving unit

Size W" x H"	Chrome Model No.	Size W" x H"	Chrome Model No.
18 x 63	EP1863C	18 x 74	EP1874C
24 x 63	EP2463C	24 x 74	EP2474C

Tray Slide Inserts

- Ideal for use on shelving trucks, carts and Work Centres
- Valuable space savers, Tray Slide Inserts allow trays and tote pans to be suspended between shelves
- Slides fit between any 18" and 24" deep wire shelves when spaced 22" apart
- 1½" spacing between slides

Size W" x L"	Description	PolySeal Model No.	Weight lbs.
18 x 18	18" x 18" Tray Slide	TS18Z	10
24 x 24	24" x 24" Tray Slide	TS24Z	12
24 x 24	24" x 24" SINGLE Tray Slide	STS24Z	2



Rods and Clips

- Enclose back and/or sides of shelving easily with rods and clips
- Each rod includes four chrome finish clips that allow the rods to be attached at desired spaces

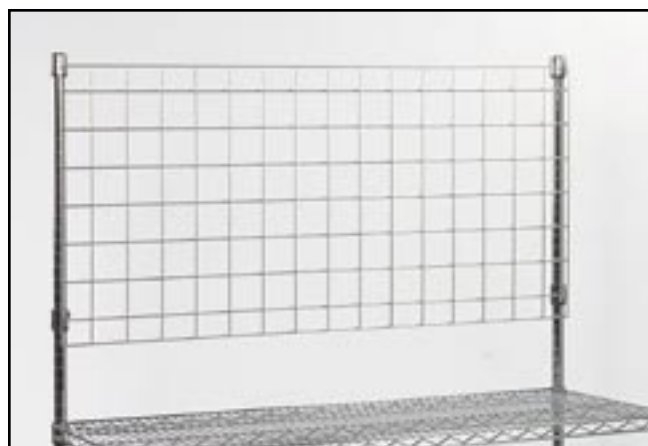
Size L"	Description	Chrome Model No.	Weight lbs.
52	Chrome rod fits 54" post	ROD52	1.0
61	Chrome rod fits 63" post	ROD61	1.5
72	Chrome rod fits 74" post	ROD72	2.0
84	Chrome rod fits 86" post	ROD84	2.5
Additional clips are packaged by the dozen		RODCLIPS	1.0



Back Grid Plate

- Ideal accessory for hanging tools and other items on Work Centres for easy accessibility
- Grid comes with four shelf collar hooks to attach securely to posts

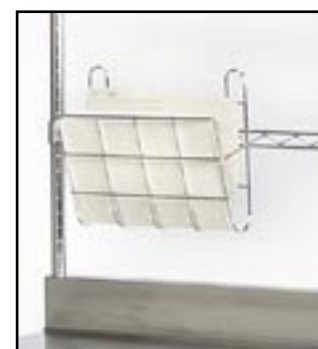
Size W" x L"	PolySeal Model No.	Weight lbs.
22 x 36	BGP2236Z	5
22 x 42	BGP2242Z	6
22 x 48	BGP2248Z	7
22 x 54	BGP2254Z	8
22 x 60	BGP2260Z	9
22 x 66	BGP2266Z	10
22 x 72	BGP2272Z	11



Document Holder

- Store important documents in the handy Document Holder
- Holder attaches to any Tarrison shelf, hanger rail or back grid panel

Size W" x L" x H"	Chrome Model No.	Weight lbs.
12.375 x 2 x 8.625	DH	2
Shown on Tarrison Utility Cart and Work Centre		





Small
"J" Hook



Large
"J" Hook



Double
"J" Hook



Wire "S" Hook



Add-on "S" Hook



Hooks

- Variety of multi-purpose snap-on "J" hooks hang easily on shelves, grid panels or hanger rails for fingertip access to items

Size H"	Model No.
3½" Small "J" Hook	SJH
3½" Large "J" Hook	LJH
3½" Double "J" Hook	DJH
3" Wire "S" Hook	WSH
Hooks sold individually	

Add-on S-Hooks

- Use Add-on "S" hooks instead of posts
- Use two hooks for each add-on wire shelf
- Use in corners for "L-shaped" shelving unit, on the side for back-to-back units or on the ends for continuous runs of shelving

Size H"	Chrome Model No.
1"	ADSH
Hooks sold individually Shown on "L-shaped" Add-On Shelving Unit	

Shelf Clips

- Interlocking Plastic Shelf Clip has an interior mating rib to ensure positive shelf position
- Interior marking ensures installation is right side up making the process a snap
- Aluminum shelf clip is used when static electrical conductivity is required and used in conjunction with optional grounding chain; only one clip required
- Aluminum shelf clips also used in high heat applications



Grounding
Chain



Plastic
Shelf Clip



Aluminum
Shelf Clip

Size	Model No.
1" High Plastic Shelf Clip Package of 4	PSC
1" High Aluminum Shelf Clip - each	ASC
8" Long Grounding Chain	GC8



Shelf Collar Hook

- Use collar hooks to convert straight shelves to slanted for easier visibility of goods
- Great for hanging tools and utensils from Tarrison Posts

Size	Chrome Model No.
½" Small Shelf Collar Hook	SCH1
1½" Large Shelf Collar Hook	SCH2
Sold in packs of 4	



Shelf Collar Plug

- For a finished high-tech look, cover the shelf collar with a chrome plug and eliminate dirt build-up
- Often used when using wall brackets or add-on clips

Chrome Model No.	SCP
------------------	-----



Plastic Post Cap

- Use on top of post for a finished look
- Plastic post cap comes standard with all Tarrison posts

Model No.	PPC
-----------	-----



Post Leveller

Post Insert and Leveller

- Tarrison shelving units will never be uneven, even if the floors are
- Post inserts and levellers come standard with all Tarrison posts
- Replacement Levellers and Inserts may be ordered individually

Description	Model No.
Post Insert (not shown)	POSTINSRT
Post Leveller	PL



Non-Marking Post Leveller

- Sturdy post leveller that won't mark floor surfaces

Model No.	NMPL
-----------	------



Post Joining Clamp

- Increase the stability of shelving units by joining two posts securely together with the Post Joining Clamp
- Recommended for use with Tarrison Space-Tite systems and when banking Work Centres together is required

Description	Model No.
1 1/16"	SPC
2"	LPC



Foot Plate

- Increases stability and allows unit to be bolted to the floor for added safety
- Recommended for use with Tarrison Space-Tite systems and Work Centres

Model No.	FP
-----------	----



Post Extension Bolt

- Securely joins two posts top to bottom to extend the shelving unit height

Model No.	DTB
-----------	-----



Utility Basket

- Transport documents and other items in the handy Utility Basket
- Basket slides easily over Tarrison shelving frames for a solid fit

Size L" x W" x H"	Chrome Model No.
12 x 10 x 4	UB
Shown on Tarrison Utility Cart	



Threaded Stem Casters

- Threaded Polyurethane non-marking stem casters fit easily and securely into Tarrison posts to add mobility to stationary units
- No need to remove post inserts to add casters

Size inches	Swivel Model No.	Swivel w/Brake Model No.
3	C3SPS	C3SPB
4	C4SPS	C4SPB
5	C5SPS	C5SPB



Rigid Casters

- Non-marking Polyurethane
- Rigid casters for use with Tie Bar - see page 54

Size inches	Model No.
5"	C5SPR



Plate Casters

- Non-marking Polyurethane
- Plate casters for use with dolly bases see pages 52 & 66

Size inches	Swivel Model No.	Swivel w/Brake Model No.
5	C5PPS	C5PPSB



Donut Bumper

- Non-marking Polyurethane designed to protect walls

Size inches	Model No.
3½"	DB
Shown on rigid caster	

Label Holder

- Clear plastic holder snaps easily on shelf edge
- Label shelves for quick product identification
- Label holder sizes determine label size

Size W"	Model No.
3	CLH3
12	CLH12
24	CLH24
Label holders can be cut to other required sizes. Labels not included.	



Wood Top Joiner

- Attach wood tops to posts quickly and securely
- Handy joiner eliminates the need to cut into wood tops

Model No.
WTJ
Mounting screws must be purchased separately



Post Wall Bracket

- Securely attaches post to wall

Model No.
PWB
Mounting screws must be purchased separately



Clothes Hanger

- Heavy-duty chrome finish wire loop hangers

Model No.
CHC12



Pizza Pan Holder

- Pizza pans stack perfectly in this wire holder
- Just "toss'em" in for organized no-mess stacking

Size W"	Model No.
7	PPH7
10	PPH10
12	PPH12
Additional sizes available, may require minimum quantity ordered	

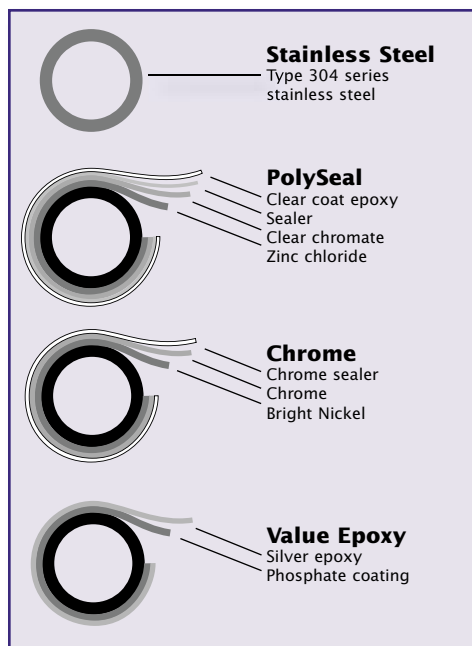


Specifications

Tarrison Product's EXTENSIVE product line, commitment to INVENTORY and vast selection of finishes and sizes will meet your storage needs each and every time.

Tarrison's storage and handling equipment is uniquely designed to fit every storage application. The open wire truss-reinforced shelves permit light to penetrate, allow free air circulation and give greater visibility of merchandise. Moisture and dust accumulation is reduced and maximum effectiveness of sprinkler system is ensured. Assembly is simple. The heavy-duty tubular posts with rolled circular grooves at 1-inch increments are clearly numbered to make assembly exceptionally easy, fast and accurate. No tools are required for assembly or adjustment. The built-in tapered shelf collar mates perfectly with the inter-locking clip. The mating rib on the Tarrison clip ensures a positive shelf position on the grooved post. A perfect fit every time!

Our shelving systems come in a variety of finishes. Choose the one that is best for your application and budget.



Stainless Steel

Type 304 series stainless steel. The definitive choice for any and every application.

PolySeal

Clear epoxy powder coat electrostatically applied over bright zinc-chromate electroplating. The smart choice for any dry storage and high humidity application, such as refrigeration. Tarrison's PolySeal finish gives you added protection for longer durability and corrosion resistance at the lowest cost.

15-year corrosion warranty

Chrome

Bright nickel-chrome electro-plating. Best choice for dry storage and display applications. A brilliant finish for the high-tech look. Use where appearance is a major factor.

Value Epoxy

Value epoxy is electrostatically applied. Three-year warranty from date of manufacture. Standard in black, available in any colour.

Tarrison Shelving has one of the highest load ratings on the market today. You asked for strong, heavy-duty shelving at an affordable price and Tarrison answered.

Static Load Capacity

Up to 48" wide: 800 lbs. per shelf
Over 48" wide: 600 lbs. per shelf
Dunnage Shelving: 1,500 lbs. per shelf
Static Load is based on even distribution.

Mobile Load Capacity

Tarrison's casters have a mobile load rating of 300 lbs. each, 1,200 lbs. per unit.



Warranty

Tarrison Products Ltd. warrants that all Tarrison products will be free from defects in material and manufacture at time of shipment. We guarantee to replace any item that is found to be defective for up to one (1) year from date of shipment provided that it has been properly used.

Tarrison Products Ltd. will repair or replace any product that does not perform as represented herein with normal usage. A Tarrison Representative will examine the installation and determine repair or return disposition. No returns may be made without prior written authorization. All returns must be made freight prepaid to Tarrison Products Ltd.

All Warranties are made for the benefit of the original owner under normal usage. There are no other warranties expressed or implied beyond those stated herein. Tarrison Products' liability is limited to the replacement of defective merchandise and Tarrison will not be responsible for any and all ancillary expenses that may arise. No employee or agent of Tarrison Products Ltd. has any authority to make any representation or warranty, which exceeds those stated above.

Effective May 2005. Supersedes any previous warranty statements.

Specifications subject to change without notice. 05/05

Tarrison Products is not responsible for any errors or omissions. We reserve the right to change prices based on fluctuations in raw materials.

Description	Page No.
3 Sided Frame	46
5-Sided Shelf	40
Add-On Faucets	26
Add-On S Hooks	70
Add-On Units	45
Aluminum Shelf Clips	70
Apparel Cart	51
Back Grid Plate	69
Baker's Racks	65
Bar Sinks	21
Beer Keg Rack	46
Beverage Dispensing Faucets	33
Beverage Racks	49
Bottle Grids	49
Bread Racks	67
Bun Pan Rack	8, 48
Bus Cart	51
Can Racks	49
Cantilever Shelves	37
Casters	11, 42, 72
Ceiling Pot Racks	10
Channel Dunnage Racks	47
Channel Dunnage Shelf	41
Chinese Range Faucets	26
Clean Dish Table	14
Clothes Hanger	73
Cocktail Mix Units	21
Collar Hooks	71
Collar Plugs	71
Corner Clean Dish Table	15
Corner Soiled Dish Table	13
Corner Starter Units	44
Deck Mount Faucets	28, 29
Decking	53
Demo Table	5
Dish Table Undershelf	14
Dividers	66, 68
Document Holder	61, 69
Dolly Bases	52
Donut Bumper	72
Drains	32
Drawer	11
Drop In Sinks	20
Drying Racks	58
Dump Bin Shelving	66
Dunnage Racks	47
Dunnage Shelf Mat	41
Electronic Faucets	29
Enclosure Panels	63, 68
Equipment Stands	5

Description	Page No.
Expand-a-Shelf	40
Faucets	26 to 29
Five Sided Shelf	40
Flex Mount Shelves	39
Floor Track Systems	55, 56, 57
Foot Pedals	33
Foot Plates	71
Garment Rack	58
Grid Shelf	61
Grounding Chain	70
Hand Sinks	20
Hanger Rails	68
High Density Storage	54 to 57
Hooks	61, 70
Joining Clamps	71
Knee Pedals	33
Label Holder	73
Ledges	68
Leg Brace	11
Linen Carts	51
Mail Room Delivery Carts	50
Medium Duty Storage/Display	63
Mesh Decking	53
Metric Conversion Chart	2
Mixer Table	5
Mop Sinks	20
Nozzles	31
OEM Sink Bowls	20
Overflow	30
Overlays	40
Overshelves	9
Pan Racks	8, 48
Pizza Pan Holder	73
Plastic Shelf Clips	70
Plate Casters	52
Platforms	48
Post Caps	70
Post Extension Bolt	71
Post Inserts	71
Post Kit	59
Post Levellers	71
Post Wall Bracket	73
Posts	38
Pot Racks	10
Pre-Rinse Basket	11
Pre-Rinse Units	22 to 25
Quarter Shelf	40
Rack, Bun Pan	8
Removable Drain Board	11
Rods and Clips	69

Description	Page No.
Safety Push Handles	51
Security units	52
Shanks	31
Shelves	38 to 41
Shelving Accessories	68 to 73
Sinks, Centre Drain	18, 19
Sinks, Corner Drain	16, 17
Slanted Shelves	67
Soap Dispenser	33
Soiled Dish Table	12
Soiled Pot Table	11
Solid Stainless Steel Shelves	41
Solid Surfaces	65
Space Tite System	54
Speed Rails	11
Spice Rack	61
Stacking Dunnage Racks	47
Starter Units	42, 43
Table Pot Racks	10
Three Sided Frame	46
Tray Slide Inserts	11, 48, 69
Triangular Shelf	40
Undershelves	11
Utility Basket	61, 72
Utility Cart Handles	50
Utility Carts	50
Utility Racks	46
Wall Garment Rack	58
Wall Grid	60
Wall Grid Bracket	61
Wall Grid Clip	61
Wall Mount Bracket	59
Wall Mount Faucets	26, 27
Wall Pot Racks	10
Wall Shelf Dish Rack	13
Wall Shelves	9
Waste Handles	30
Wide Span Shelves	39
Wine Storage	62, 63
Wire Shelves	38
Wood Top Brace	11
Wood Top Joiner	73
Work Centres	34 to 36
Work Tables	3 to 8
Work Tables, 4" Backsplash	3
Work Tables, Hardwood Top	6, 7
Work Tables, Nested	4
Work Tables, Poly Top	8
Work Tables, Riser Back	4
Work Tables, SS Top	3



Tarrison *Products Ltd.*

CORPORATE HEAD OFFICE

2780 Coventry Road,
Oakville, Ontario, Canada L6H 6R1

Phone: **905-825-9665**

Fax: 905-825-0965

sales@tarrison.com

www.tarrison.com

US SALES OFFICE

12 Riverview Drive
Essex Junction, VT, USA, 05452

Phone: **802-872-9292**

Fax: 802-878-9603

email: tarrisonus@adelphia.net

website: www.tarrison.com

US DISTRIBUTION CENTER

1515 Ellis Street
Waukesha, Wisconsin, USA, 53186

Phone: **262-521-9667**

Fax: 262-521-9972

email: salesmgr@tarrison.com

website: www.tarrison.com

\$2.50